

CTNNBL1 Antibody (N-term)
Affinity Purified Rabbit Polyclonal Antibody (Pab)
Catalog # AP17056a

Specification

CTNNBL1 Antibody (N-term) - Product Information

Application	WB,E
Primary Accession	Q8WYA6
Other Accession	NP_110517.2
Reactivity	Human
Host	Rabbit
Clonality	Polyclonal
Isotype	Rabbit IgG
Calculated MW	65173
Antigen Region	16-43

CTNNBL1 Antibody (N-term) - Additional Information

Gene ID 56259

Other Names

Beta-catenin-like protein 1, Nuclear-associated protein, NAP, Testis development protein NYD-SP19, CTNNBL1, C20orf33

Target/Specificity

This CTNNBL1 antibody is generated from rabbits immunized with a KLH conjugated synthetic peptide between 16-43 amino acids from the N-terminal region of human CTNNBL1.

Dilution

WB~~1:1000

E~~Use at an assay dependent concentration.

Format

Purified polyclonal antibody supplied in PBS with 0.09% (W/V) sodium azide. This antibody is purified through a protein A column, followed by peptide affinity purification.

Storage

Maintain refrigerated at 2-8°C for up to 2 weeks. For long term storage store at -20°C in small aliquots to prevent freeze-thaw cycles.

Precautions

CTNNBL1 Antibody (N-term) is for research use only and not for use in diagnostic or therapeutic procedures.

CTNNBL1 Antibody (N-term) - Protein Information

Name CTNNBL1

Synonyms C20orf33

Function Component of the PRP19-CDC5L complex that forms an integral part of the spliceosome and is required for activating pre-mRNA splicing. Participates in AID/AICDA-mediated somatic hypermutation (SHM) and class-switch recombination (CSR), 2 processes resulting in the production of high-affinity, mutated isotype-switched antibodies (PubMed:[32484799](#)).

Cellular Location

[Isoform 1]: Nucleus.

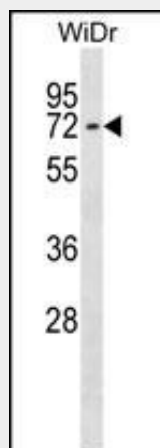
Tissue Location

Widely expressed with highest levels in skeletal muscle, placenta, heart, spleen, testis and thyroid

CTNNBL1 Antibody (N-term) - Protocols

Provided below are standard protocols that you may find useful for product applications.

- [Western Blot](#)
- [Blocking Peptides](#)
- [Dot Blot](#)
- [Immunohistochemistry](#)
- [Immunofluorescence](#)
- [Immunoprecipitation](#)
- [Flow Cytometry](#)
- [Cell Culture](#)

CTNNBL1 Antibody (N-term) - Images

CTNNBL1 Antibody (N-term) (Cat. #AP17056a) western blot analysis in WiDr cell line lysates (35ug/lane). This demonstrates the CTNNBL1 antibody detected the CTNNBL1 protein (arrow).

CTNNBL1 Antibody (N-term) - Background

The protein encoded by this gene contains an acidic domain, a putative bipartite nuclear localization signal, a nuclear export signal, a leucine-isoleucine zipper, and phosphorylation motifs. In addition, the encoded protein contains Armadillo/beta-catenin-like repeats, which have been implicated in protein-protein interactions. Although the function of this protein has not been determined, the C-terminal portion of the protein has

been shown to possess apoptosis-inducing activity. [provided by RefSeq].

CTNNBL1 Antibody (N-term) - References

Ichikawa, S., et al. J. Bone Miner. Res. 25(8):1821-1829(2010)
Rose, J.E., et al. Mol. Med. 16 (7-8), 247-253 (2010) :
Badiglian Filho, L., et al. Oncol. Rep. 21(2):313-320(2009)
Andreasen, C.H., et al. BMC Med. Genet. 10, 17 (2009) :
Vogel, C.I., et al. BMC Med. Genet. 10, 14 (2009) :