

**CRLF1 Antibody (Center)**  
**Affinity Purified Rabbit Polyclonal Antibody (Pab)**  
**Catalog # AP17059c****Specification**

---

**CRLF1 Antibody (Center) - Product Information**

|                   |  |
|-------------------|--|
| Application       | WB,E   |
| Primary Accession | <a href="#">O75462</a>                               |
| Other Accession   | <a href="#">O9JM58</a> , <a href="#">NP_004741.1</a> |
| Reactivity        | Human  |
| Predicted         | Mouse  |
| Host              | Rabbit   |
| Clonality         | Polyclonal   |
| Isotype           | Rabbit IgG   |
| Calculated MW     | 46302  |
| Antigen Region    | 255-283  |

**CRLF1 Antibody (Center) - Additional Information****Gene ID** 9244**Other Names**

Cytokine receptor-like factor 1, Cytokine-like factor 1, CLF-1, ZcytoR5, CRLF1

**Target/Specificity**

This CRLF1 antibody is generated from rabbits immunized with a KLH conjugated synthetic peptide between 255-283 amino acids from the Central region of human CRLF1.

**Dilution**

WB~~1:1000

E~~Use at an assay dependent concentration.

**Format**

Purified polyclonal antibody supplied in PBS with 0.09% (W/V) sodium azide. This antibody is purified through a protein A column, followed by peptide affinity purification.

**Storage**

Maintain refrigerated at 2-8°C for up to 2 weeks. For long term storage store at -20°C in small aliquots to prevent freeze-thaw cycles.

**Precautions**

CRLF1 Antibody (Center) is for research use only and not for use in diagnostic or therapeutic procedures.

**CRLF1 Antibody (Center) - Protein Information****Name** CRLF1

**Function** In complex with CLCF1, forms a heterodimeric neurotropic cytokine that plays a crucial role during neuronal development (Probable). May also play a regulatory role in the immune system.

**Cellular Location**  
Secreted.

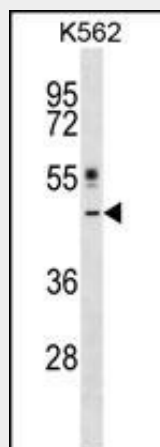
**Tissue Location**  
Highest levels of expression observed in spleen, thymus, lymph node, appendix, bone marrow, stomach, placenta, heart, thyroid and ovary. Strongly expressed also in fetal lung

### **CRLF1 Antibody (Center) - Protocols**

Provided below are standard protocols that you may find useful for product applications.

- [Western Blot](#)
- [Blocking Peptides](#)
- [Dot Blot](#)
- [Immunohistochemistry](#)
- [Immunofluorescence](#)
- [Immunoprecipitation](#)
- [Flow Cytometry](#)
- [Cell Culture](#)

### **CRLF1 Antibody (Center) - Images**



CRLF1 Antibody (Center) (Cat. #AP17059c) western blot analysis in K562 cell line lysates (35ug/lane). This demonstrates the CRLF1 antibody detected the CRLF1 protein (arrow).

### **CRLF1 Antibody (Center) - Background**

This gene encodes a member of the cytokine type I receptor family. The protein forms a secreted complex with cardiotrophin-like cytokine factor 1 and acts on cells expressing ciliary neurotrophic factor receptors. The complex can promote survival of neuronal cells. Mutations in this gene result in Crisponi syndrome and cold-induced sweating syndrome. [provided by RefSeq].

### **CRLF1 Antibody (Center) - References**

Tsuritani, K., et al. Calcif. Tissue Int. 86(1):47-57(2010)  
Crisponi, L., et al. Am. J. Hum. Genet. 80(5):971-981(2007)  
Dagoneau, N., et al. Am. J. Hum. Genet. 80(5):966-970(2007)  
Zhang, Z., et al. Protein Sci. 13(10):2819-2824(2004)  
Heese, K., et al. J. Cell. Biochem. 91(5):1030-1042(2004)