

**IQCB1 Antibody (Center)**  
**Affinity Purified Rabbit Polyclonal Antibody (Pab)**  
**Catalog # AP17066C****Specification**

---

**IQCB1 Antibody (Center) - Product Information**

Application	WB,E
Primary Accession	<a href="#">Q15051</a>
Other Accession	<a href="#">NP_001018865.2</a> , <a href="#">NP_001018864.2</a>
Reactivity	Human
Host	Rabbit
Clonality	Polyclonal
Isotype	Rabbit IgG
Calculated MW	68929
Antigen Region	384-411

**IQCB1 Antibody (Center) - Additional Information****Gene ID** 9657**Other Names**

IQ calmodulin-binding motif-containing protein 1, Nephrocystin-5, p53 and DNA damage-regulated IQ motif protein, PIQ, IQCB1, KIAA0036, NPHP5

**Target/Specificity**

This IQCB1 antibody is generated from rabbits immunized with a KLH conjugated synthetic peptide between 384-411 amino acids from the Central region of human IQCB1.

**Dilution**

WB~~1:1000

**Format**

Purified polyclonal antibody supplied in PBS with 0.09% (W/V) sodium azide. This antibody is purified through a protein A column, followed by peptide affinity purification.

**Storage**

Maintain refrigerated at 2-8°C for up to 2 weeks. For long term storage store at -20°C in small aliquots to prevent freeze-thaw cycles.

**Precautions**

IQCB1 Antibody (Center) is for research use only and not for use in diagnostic or therapeutic procedures.

**IQCB1 Antibody (Center) - Protein Information****Name** IQCB1**Synonyms** KIAA0036, NPHP5

**Function** Involved in ciliogenesis. The function in an early step in cilia formation depends on its association with CEP290/NPHP6 (PubMed:[21565611](#), PubMed:[23446637](#)). Involved in regulation of the BBSome complex integrity, specifically for presence of BBS2 and BBS5 in the complex, and in ciliary targeting of selected BBSome cargos. May play a role in controlling entry of the BBSome complex to cilia possibly implicating CEP290/NPHP6 (PubMed:[25552655](#)).

#### Cellular Location

Cytoplasm, cytoskeleton, microtubule organizing center, centrosome. Cytoplasm, cytoskeleton, microtubule organizing center, centrosome, centriole. Note=Localization to the centrosome depends on the interaction with CEP290/NPHP6

#### Tissue Location

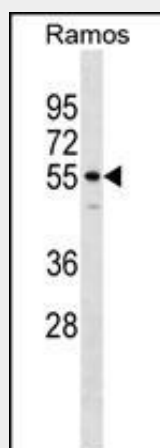
Ubiquitously expressed in fetal and adult tissues. Localized to the outer segments and connecting cilia of photoreceptor cells. Up-regulated in a number of primary colorectal and gastric tumors.

### IQCB1 Antibody (Center) - Protocols

Provided below are standard protocols that you may find useful for product applications.

- [Western Blot](#)
- [Blocking Peptides](#)
- [Dot Blot](#)
- [Immunohistochemistry](#)
- [Immunofluorescence](#)
- [Immunoprecipitation](#)
- [Flow Cytometry](#)
- [Cell Culture](#)

### IQCB1 Antibody (Center) - Images



IQCB1 Antibody (Center) (Cat. #AP17066c) western blot analysis in Ramos cell line lysates (35ug/lane). This demonstrates the IQCB1 antibody detected the IQCB1 protein (arrow).

### IQCB1 Antibody (Center) - Background

This gene encodes a nephrocystin protein that interacts with calmodulin and the retinitis pigmentosa GTPase regulator protein. The encoded protein has a central coiled-coil region and two calmodulin-binding IQ domains. It is localized to the primary cilia of renal epithelial cells and connecting cilia of

photoreceptor cells. The protein is thought to play a role in ciliary function. Defects in this gene result in Senior-Loken syndrome type 5. Alternative splicing results in multiple transcript variants.

#### **IQCB1 Antibody (Center) - References**

Hildebrandt, F., et al. J. Am. Soc. Nephrol. 20(1):23-35(2009)  
Schafer, T., et al. Hum. Mol. Genet. 17(23):3655-3662(2008)  
Luo, X., et al. Cancer Res. 65(23):10725-10733(2005)  
le Maire, A., et al. Proteins 59(2):347-355(2005)  
Mollet, G., et al. Hum. Mol. Genet. 14(5):645-656(2005)