

LIN9 Antibody (N-term)
Affinity Purified Rabbit Polyclonal Antibody (Pab)
Catalog # AP17067A

Specification

LIN9 Antibody (N-term) - Product Information

Application	WB,E
Primary Accession	Q5TKA1
Other Accession	Q8C735 , Q4R8N2 , Q5RHO8 , NP_775106.2
Reactivity	Human
Predicted	Zebrafish, Monkey, Mouse
Host	Rabbit
Clonality	Polyclonal
Isotype	Rabbit IgG
Calculated MW	61946
Antigen Region	132-160

LIN9 Antibody (N-term) - Additional Information

Gene ID 286826

Other Names

Protein lin-9 homolog, HuLin-9, hLin-9, Beta subunit-associated regulator of apoptosis, TUDOR gene similar protein, Type I interferon receptor beta chain-associated protein, pRB-associated protein, LIN9, BARA, TGS

Target/Specificity

This LIN9 antibody is generated from rabbits immunized with a KLH conjugated synthetic peptide between 132-160 amino acids from the N-terminal region of human LIN9.

Dilution

WB~~1:500

E~~Use at an assay dependent concentration.

Format

Purified polyclonal antibody supplied in PBS with 0.09% (W/V) sodium azide. This antibody is purified through a protein A column, followed by peptide affinity purification.

Storage

Maintain refrigerated at 2-8°C for up to 2 weeks. For long term storage store at -20°C in small aliquots to prevent freeze-thaw cycles.

Precautions

LIN9 Antibody (N-term) is for research use only and not for use in diagnostic or therapeutic procedures.

LIN9 Antibody (N-term) - Protein Information

Name LIN9

Synonyms BARA, TGS

Function Acts as a tumor suppressor. Inhibits DNA synthesis. Its ability to inhibit oncogenic transformation is mediated through its association with RB1. Plays a role in the expression of genes required for the G1/S transition.

Cellular Location

Nucleus, nucleoplasm. Note=Found in perinucleolar structures. Associated with chromatin

Tissue Location

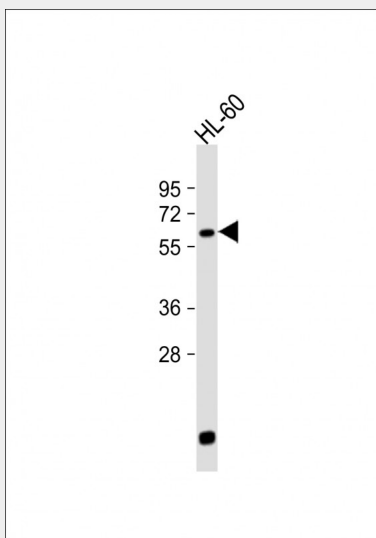
Expressed in thymus and testis.

LIN9 Antibody (N-term) - Protocols

Provided below are standard protocols that you may find useful for product applications.

- [Western Blot](#)
- [Blocking Peptides](#)
- [Dot Blot](#)
- [Immunohistochemistry](#)
- [Immunofluorescence](#)
- [Immunoprecipitation](#)
- [Flow Cytometry](#)
- [Cell Culture](#)

LIN9 Antibody (N-term) - Images



Anti-LIN9 Antibody (N-term) at 1:500 dilution + HL-60 whole cell lysate Lysates/proteins at 20 µg per lane. Secondary Goat Anti-Rabbit IgG, (H+L), Peroxidase conjugated at 1/10000 dilution. Predicted band size : 62 kDa Blocking/Dilution buffer: 5% NFDM/TBST.

LIN9 Antibody (N-term) - Background

LIN9 acts as a tumor suppressor. Inhibits DNA synthesis. Its ability to inhibit oncogenic transformation is mediated through its association with RB1. Plays a role in the expression of genes

required for the G1/S transition.

LIN9 Antibody (N-term) - References

Rose, J. Phd, et al. Mol. Med. (2010) In press :
Arking, D.E., et al. PLoS ONE 5 (3), E9879 (2010) :
Pilkinton, M., et al. Oncogene 26(54):7535-7543(2007)
Osterloh, L., et al. EMBO J. 26(1):144-157(2007)
Pilkinton, M., et al. J. Biol. Chem. 282(1):168-175(2007)