

**SSBP3 Antibody (Center)**  
**Affinity Purified Rabbit Polyclonal Antibody (Pab)**  
**Catalog # AP17077c****Specification**

---

**SSBP3 Antibody (Center) - Product Information**

Application	WB,E
Primary Accession	<a href="#">O9BWW4</a>
Other Accession	<a href="#">O9D032</a> , <a href="#">O98948</a> , <a href="#">NP_001009955.1</a> , <a href="#">NP_060540.2</a>
Reactivity	Human
Predicted	Chicken, Mouse
Host	Rabbit
Clonality	Polyclonal
Isotype	Rabbit IgG
Calculated MW	40421
Antigen Region	166-192

**SSBP3 Antibody (Center) - Additional Information****Gene ID** 23648**Other Names**

Single-stranded DNA-binding protein 3, Sequence-specific single-stranded-DNA-binding protein, SSBP3, SSDP, SSDP1

**Target/Specificity**

This SSBP3 antibody is generated from rabbits immunized with a KLH conjugated synthetic peptide between 166-192 amino acids from the Central region of human SSBP3.

**Dilution**

WB~~1:1000

**Format**

Purified polyclonal antibody supplied in PBS with 0.09% (W/V) sodium azide. This antibody is purified through a protein A column, followed by peptide affinity purification.

**Storage**

Maintain refrigerated at 2-8°C for up to 2 weeks. For long term storage store at -20°C in small aliquots to prevent freeze-thaw cycles.

**Precautions**

SSBP3 Antibody (Center) is for research use only and not for use in diagnostic or therapeutic procedures.

**SSBP3 Antibody (Center) - Protein Information****Name** SSBP3

**Synonyms** SSDP, SSDP1

**Function** May be involved in transcription regulation of the alpha 2(I) collagen gene where it binds to the single-stranded polypyrimidine sequences in the promoter region.

**Cellular Location**

Nucleus.

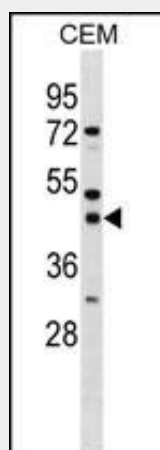
**Tissue Location**

Highly expressed in all hematopoietic tissues, including spleen, lymph node, peripheral blood, bone marrow, thymus, and fetal liver, with highest expression in thymus and fetal liver Expression is also high in heart, brain, kidney, and skeletal muscle

**SSBP3 Antibody (Center) - Protocols**

Provided below are standard protocols that you may find useful for product applications.

- [Western Blot](#)
- [Blocking Peptides](#)
- [Dot Blot](#)
- [Immunohistochemistry](#)
- [Immunofluorescence](#)
- [Immunoprecipitation](#)
- [Flow Cytometry](#)
- [Cell Culture](#)

**SSBP3 Antibody (Center) - Images**

SSBP3 Antibody (Center) (Cat. #AP17077c) western blot analysis in CEM cell line lysates (35ug/lane). This demonstrates the SSBP3 antibody detected the SSBP3 protein (arrow).

**SSBP3 Antibody (Center) - Background**

SSBP3 may be involved in transcription regulation of the alpha 2(I) collagen gene where it binds to the single-stranded polypyrimidine sequences in the promoter region (By similarity).

**SSBP3 Antibody (Center) - References**

Rose, J.E., et al. Mol. Med. 16 (7-8), 247-253 (2010) :  
Dey-Guha, I., et al. J. Cell. Biochem. 103(6):1856-1865(2008)

Sugiyama, N., et al. Mol. Cell Proteomics 6(6):1103-1109(2007)  
Lamesch, P., et al. Genomics 89(3):307-315(2007)  
Wu, L. Biochem. Biophys. Res. Commun. 339(3):977-984(2006)