

TULP1 Antibody (Center)
Affinity Purified Rabbit Polyclonal Antibody (Pab)
Catalog # AP17083c**Specification**

TULP1 Antibody (Center) - Product Information

Application	WB,E
Primary Accession	O00294
Other Accession	NP_003313.3
Reactivity	Human
Host	Rabbit
Clonality	Polyclonal
Isotype	Rabbit IgG
Calculated MW	60609
Antigen Region	184-211

TULP1 Antibody (Center) - Additional Information**Gene ID** 7287**Other Names**

Tubby-related protein 1, Tubby-like protein 1, TULP1, TUBL1

Target/Specificity

This TULP1 antibody is generated from rabbits immunized with a KLH conjugated synthetic peptide between 184-211 amino acids from the Central region of human TULP1.

Dilution

WB~~1:1000

E~~Use at an assay dependent concentration.

Format

Purified polyclonal antibody supplied in PBS with 0.09% (W/V) sodium azide. This antibody is purified through a protein A column, followed by peptide affinity purification.

Storage

Maintain refrigerated at 2-8°C for up to 2 weeks. For long term storage store at -20°C in small aliquots to prevent freeze-thaw cycles.

Precautions

TULP1 Antibody (Center) is for research use only and not for use in diagnostic or therapeutic procedures.

TULP1 Antibody (Center) - Protein Information**Name** TULP1**Synonyms** TUBL1

Function Required for normal development of photoreceptor synapses. Required for normal photoreceptor function and for long-term survival of photoreceptor cells. Interacts with cytoskeleton proteins and may play a role in protein transport in photoreceptor cells (By similarity). Binds lipids, especially phosphatidylinositol 3-phosphate, phosphatidylinositol 4-phosphate, phosphatidylinositol 5-phosphate, phosphatidylinositol 3,4-bisphosphate, phosphatidylinositol 4,5- bisphosphate, phosphatidylinositol 3,4,5-bisphosphate, phosphatidylserine and phosphatidic acid (in vitro). Contribute to stimulation of phagocytosis of apoptotic retinal pigment epithelium (RPE) cells and macrophages.

Cellular Location

Cytoplasm. Cell membrane; Peripheral membrane protein; Cytoplasmic side. Secreted. Synapse. Note=Detected at synapses between photoreceptor cells and second-order neurons. Does not have a cleavable signal peptide and is secreted by an alternative pathway (By similarity).

Tissue Location

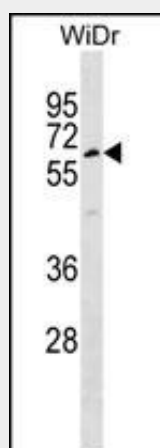
Retina-specific.

TULP1 Antibody (Center) - Protocols

Provided below are standard protocols that you may find useful for product applications.

- [Western Blot](#)
- [Blocking Peptides](#)
- [Dot Blot](#)
- [Immunohistochemistry](#)
- [Immunofluorescence](#)
- [Immunoprecipitation](#)
- [Flow Cytometry](#)
- [Cell Culture](#)

TULP1 Antibody (Center) - Images



TULP1 Antibody (Center) (Cat. #AP17083c) western blot analysis in WiDr cell line lysates (35ug/lane). This demonstrates the TULP1 antibody detected the TULP1 protein (arrow).

TULP1 Antibody (Center) - Background

This gene encodes a member of the tubby-like gene family (TULPs). Members of this family have been identified in plants, vertebrates, and invertebrates and encode proteins of unknown

function. TULP proteins share a conserved C-terminal region of approximately 200 amino acid residues. Mutations in this gene may be associated with retinitis pigmentosa.

TULP1 Antibody (Center) - References

Clark, G.R., et al. Ophthalmology (2010) In press :
Caberoy, N.B., et al. Exp. Cell Res. 316(2):245-257(2010)
Abbasi, A.H., et al. Mol. Vis. 14, 675-682 (2008) :
Mataftsi, A., et al. Invest. Ophthalmol. Vis. Sci. 48(11):5160-5167(2007)
den Hollander, A.I., et al. Arch. Ophthalmol. 125(7):932-935(2007)