

**P4HA1 Antibody (C-term)**  
**Affinity Purified Rabbit Polyclonal Antibody (Pab)**  
**Catalog # AP17086b**

**Specification**

---

**P4HA1 Antibody (C-term) - Product Information**

Application	WB,E
Primary Accession	<a href="#">P13674</a>
Other Accession	<a href="#">O1RMU3</a> , <a href="#">NP_001136067.1</a> , <a href="#">NP_000908.2</a> , <a href="#">NP_001017962.1</a>
Reactivity	Human
Predicted	Bovine
Host	Rabbit
Clonality	Polyclonal
Isotype	Rabbit IgG
Calculated MW	61049
Antigen Region	414-442

**P4HA1 Antibody (C-term) - Additional Information**

**Gene ID** 5033

**Other Names**

Prolyl 4-hydroxylase subunit alpha-1, 4-PH alpha-1, Procollagen-proline,  
2-oxoglutarate-4-dioxygenase subunit alpha-1, P4HA1, P4HA

**Target/Specificity**

This P4HA1 antibody is generated from rabbits immunized with a KLH conjugated synthetic peptide between 414-442 amino acids from the C-terminal region of human P4HA1.

**Dilution**

WB~~1:1000

E~~Use at an assay dependent concentration.

**Format**

Purified polyclonal antibody supplied in PBS with 0.09% (W/V) sodium azide. This antibody is purified through a protein A column, followed by peptide affinity purification.

**Storage**

Maintain refrigerated at 2-8°C for up to 2 weeks. For long term storage store at -20°C in small aliquots to prevent freeze-thaw cycles.

**Precautions**

P4HA1 Antibody (C-term) is for research use only and not for use in diagnostic or therapeutic procedures.

**P4HA1 Antibody (C-term) - Protein Information**

**Name** P4HA1

**Synonyms** P4HA

**Function** Catalyzes the post-translational formation of 4- hydroxyproline in -Xaa-Pro-Gly- sequences in collagens and other proteins.

**Cellular Location**

Endoplasmic reticulum lumen.

**Tissue Location**

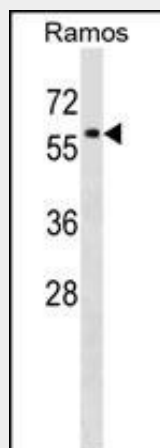
Expressed in the heart, liver, skeletal muscle, kidney, placenta, lung and pancreas.

**P4HA1 Antibody (C-term) - Protocols**

Provided below are standard protocols that you may find useful for product applications.

- [Western Blot](#)
- [Blocking Peptides](#)
- [Dot Blot](#)
- [Immunohistochemistry](#)
- [Immunofluorescence](#)
- [Immunoprecipitation](#)
- [Flow Cytometry](#)
- [Cell Culture](#)

**P4HA1 Antibody (C-term) - Images**



P4HA1 Antibody (C-term) (Cat. #AP17086b) western blot analysis in Ramos cell line lysates (35ug/lane). This demonstrates the P4HA1 antibody detected the P4HA1 protein (arrow).

**P4HA1 Antibody (C-term) - Background**

This gene encodes a component of prolyl 4-hydroxylase, a key enzyme in collagen synthesis composed of two identical alpha subunits and two beta subunits. The encoded protein is one of several different types of alpha subunits and provides the major part of the catalytic site of the active enzyme. In collagen and related proteins, prolyl 4-hydroxylase catalyzes the formation of 4-hydroxyproline that is essential to the proper three-dimensional

folding of newly synthesized procollagen chains. Alternatively spliced transcript variants encoding different isoforms have been described.

#### **P4HA1 Antibody (C-term) - References**

Rose, J. Phd, et al. Mol. Med. (2010) In press :  
Gorres, K.L., et al. PLoS ONE 4 (11), E7635 (2009) :  
Koivunen, P., et al. J. Biol. Chem. 281(39):28712-28720(2006)  
Fahling, M., et al. J. Biol. Chem. 281(36):26089-26101(2006)  
Grimmer, C., et al. Am. J. Pathol. 169(2):491-502(2006)