

MMRN1 Antibody (N-term)
Affinity Purified Rabbit Polyclonal Antibody (Pab)
Catalog # AP17087a**Specification**

MMRN1 Antibody (N-term) - Product Information

Application	WB,E
Primary Accession	Q13201
Other Accession	NP_031377.2
Reactivity	Human
Host	Rabbit
Clonality	Polyclonal
Isotype	Rabbit IgG
Calculated MW	138110
Antigen Region	179-207

MMRN1 Antibody (N-term) - Additional Information**Gene ID** 22915**Other Names**

Multimerin-1, EMILIN-4, Elastin microfibril interface located protein 4, Elastin microfibril interfacier 4, Endothelial cell multimerin, Platelet glycoprotein Ia*, 155 kDa platelet multimerin, p-155, p155, MMRN1, ECM, EMILIN4, GPIA*, MMRN

Target/Specificity

This MMRN1 antibody is generated from rabbits immunized with a KLH conjugated synthetic peptide between 179-207 amino acids from the N-terminal region of human MMRN1.

Dilution

WB~~1:1000

Format

Purified polyclonal antibody supplied in PBS with 0.09% (W/V) sodium azide. This antibody is purified through a protein A column, followed by peptide affinity purification.

Storage

Maintain refrigerated at 2-8°C for up to 2 weeks. For long term storage store at -20°C in small aliquots to prevent freeze-thaw cycles.

Precautions

MMRN1 Antibody (N-term) is for research use only and not for use in diagnostic or therapeutic procedures.

MMRN1 Antibody (N-term) - Protein Information**Name** MMRN1

Synonyms ECM, EMILIN4, GPIA*, MMRN

Function Carrier protein for platelet (but not plasma) factor V/Va. Plays a role in the storage and stabilization of factor V in platelets. Upon release following platelet activation, may limit platelet and plasma factor Va-dependent thrombin generation. Ligand for integrin alpha-IIb/beta-3 and integrin alpha-V/beta-3 on activated platelets, and may function as an extracellular matrix or adhesive protein.

Cellular Location

Secreted.

Tissue Location

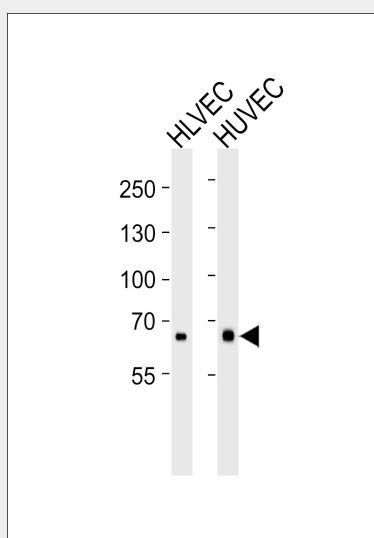
Synthesized by endothelial cells and megakaryocytes. Stored in platelet alpha granules and endothelial cell Weibel-Palade bodies, following activation of these cells, it is released and attached to megakaryocytes, platelets, endothelium and subendothelium of blood vessels. Not found in plasma. Found in vascular tissues such as placenta, lung, and liver.

MMRN1 Antibody (N-term) - Protocols

Provided below are standard protocols that you may find useful for product applications.

- [Western Blot](#)
- [Blocking Peptides](#)
- [Dot Blot](#)
- [Immunohistochemistry](#)
- [Immunofluorescence](#)
- [Immunoprecipitation](#)
- [Flow Cytometry](#)
- [Cell Culture](#)

MMRN1 Antibody (N-term) - Images



Western blot analysis of lysates from HLVEC, HUVEC cell line (from left to right), using MMRN1 Antibody (N-term)(Cat. #AP17087a). AP17087a was diluted at 1:1000 at each lane. A goat anti-rabbit IgG H&L(HRP) at 1:5000 dilution was used as the secondary antibody. Lysates at 35ug per lane.

MMRN1 Antibody (N-term) - Background

Multimerin is a massive, soluble protein found in platelets and in the endothelium of blood vessels. It is comprised of subunits linked by interchain disulfide bonds to form large, variably sized homomultimers. Multimerin is a factor V/Va-binding protein and may function as a carrier protein for platelet factor V. It may also have functions as an extracellular matrix or adhesive protein. Recently, patients with an unusual autosomal-dominant bleeding disorder (factor V Quebec) were found to have a deficiency of platelet multimerin.

MMRN1 Antibody (N-term) - References

Davila, S., et al. Genes Immun. 11(3):232-238(2010)
Simon-Sanchez, J., et al. Nat. Genet. 41(12):1308-1312(2009)
Tasneem, S., et al. J. Thromb. Haemost. 7(4):685-692(2009)
Jeimy, S.B., et al. Thromb. Haemost. 100(6):1058-1067(2008)
Jeimy, S.B., et al. Thromb. Res. 123(2):352-354(2008)