

ARF5 Antibody (Center)
Affinity Purified Rabbit Polyclonal Antibody (Pab)
Catalog # AP17093C**Specification**

ARF5 Antibody (Center) - Product Information

| | |
|-------------------|---|
| Application | WB,E |
| Primary Accession | P84085 |
| Other Accession | P84083 , P84084 , NP_001653.1 |
| Reactivity | Human |
| Predicted | Mouse, Rat |
| Host | Rabbit |
| Clonality | Polyclonal |
| Isotype | Rabbit IgG |
| Calculated MW | 20530 |
| Antigen Region | 80-108 |

ARF5 Antibody (Center) - Additional Information**Gene ID** 381**Other Names**

ADP-ribosylation factor 5, ARF5

Target/Specificity

This ARF5 antibody is generated from rabbits immunized with a KLH conjugated synthetic peptide between 80-108 amino acids from the Central region of human ARF5.

Dilution

WB~~1:1000

E~~Use at an assay dependent concentration.

Format

Purified polyclonal antibody supplied in PBS with 0.09% (W/V) sodium azide. This antibody is purified through a protein A column, followed by peptide affinity purification.

Storage

Maintain refrigerated at 2-8°C for up to 2 weeks. For long term storage store at -20°C in small aliquots to prevent freeze-thaw cycles.

Precautions

ARF5 Antibody (Center) is for research use only and not for use in diagnostic or therapeutic procedures.

ARF5 Antibody (Center) - Protein Information**Name** ARF5

Function GTP-binding protein involved in protein trafficking; may modulate vesicle budding and uncoating within the Golgi apparatus.

Cellular Location

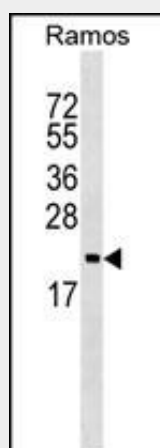
Golgi apparatus. Cytoplasm, perinuclear region. Membrane; Lipid-anchor. Golgi apparatus, trans-Golgi network membrane {ECO:0000250|UniProtKB:P84084}; Lipid-anchor {ECO:0000250|UniProtKB:P84084}

ARF5 Antibody (Center) - Protocols

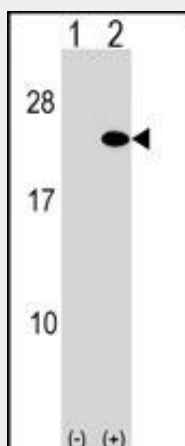
Provided below are standard protocols that you may find useful for product applications.

- [Western Blot](#)
- [Blocking Peptides](#)
- [Dot Blot](#)
- [Immunohistochemistry](#)
- [Immunofluorescence](#)
- [Immunoprecipitation](#)
- [Flow Cytometry](#)
- [Cell Culture](#)

ARF5 Antibody (Center) - Images



ARF5 Antibody (Center) (Cat. #AP17093c) western blot analysis in Ramos cell line lysates (35ug/lane). This demonstrates the ARF5 antibody detected the ARF5 protein (arrow).



Western blot analysis of ARF5 (arrow) using rabbit polyclonal ARF5 Antibody (Center) (Cat. #AP17093c). 293 cell lysates (2 ug/lane) either nontransfected (Lane 1) or transiently transfected (Lane 2) with the ARF5 gene.

ARF5 Antibody (Center) - Background

ADP-ribosylation factor 5 (ARF5) is a member of the human ARF gene family. These genes encode small guanine nucleotide-binding proteins that stimulate the ADP-ribosyltransferase activity of cholera toxin and play a role in vesicular trafficking and as activators of phospholipase D. The gene products include 6 ARF proteins and 11 ARF-like proteins and constitute 1 family of the RAS superfamily. The ARF proteins are categorized as class I (ARF1, ARF2, and ARF3), class II (ARF4 and ARF5) and class III (ARF6). The members of each class share a common gene organization. The ARF5 gene spans approximately 3.2kb of genomic DNA and contains six exons and five introns. [provided by RefSeq].

ARF5 Antibody (Center) - References

Shiba, T., et al. Proc. Natl. Acad. Sci. U.S.A. 103(42):15416-15421(2006)
Austin, C., et al. Biochemistry 41(14):4669-4677(2002)
Shin, O.H., et al. Biochemistry 40(36):10846-10852(2001)
Nevrivy, D.J., et al. J. Biol. Chem. 275(22):16827-16836(2000)
Kondo, A., et al. Mol. Biol. Cell 11(4):1315-1327(2000)