

PANX1 Antibody (Center)
Affinity Purified Rabbit Polyclonal Antibody (Pab)
Catalog # AP17112c

Specification

PANX1 Antibody (Center) - Product Information

Application	WB,E
Primary Accession	Q96RD7
Other Accession	P60570 , Q9JIP4 , NP_056183.2
Reactivity	Human
Predicted	Mouse, Rat
Host	Rabbit
Clonality	Polyclonal
Isotype	Rabbit IgG
Calculated MW	48050
Antigen Region	124-152

PANX1 Antibody (Center) - Additional Information

Gene ID 24145

Other Names

Pannexin-1, PANX1, MRS1

Target/Specificity

This PANX1 antibody is generated from rabbits immunized with a KLH conjugated synthetic peptide between 124-152 amino acids from the Central region of human PANX1.

Dilution

WB~~1:1000

E~~Use at an assay dependent concentration.

Format

Purified polyclonal antibody supplied in PBS with 0.09% (W/V) sodium azide. This antibody is purified through a protein A column, followed by peptide affinity purification.

Storage

Maintain refrigerated at 2-8°C for up to 2 weeks. For long term storage store at -20°C in small aliquots to prevent freeze-thaw cycles.

Precautions

PANX1 Antibody (Center) is for research use only and not for use in diagnostic or therapeutic procedures.

PANX1 Antibody (Center) - Protein Information

Name PANX1 ([HGNC:8599](#))

Function Ion channel involved in a variety of physiological functions such as blood pressure regulation, apoptotic cell clearance and oogenesis (PubMed:[15304325](#), PubMed:[16908669](#), PubMed:[20829356](#), PubMed:[20944749](#), PubMed:[30918116](#)). Forms anion-selective channels with relatively low conductance and an order of permeabilities: nitrate>iodide>chloride>>aspartate=glutamate=gluconate (By similarity). Can release ATP upon activation through phosphorylation or cleavage at C-terminus (PubMed:[32238926](#)). May play a role as a Ca(2+)- leak channel to regulate ER Ca(2+) homeostasis (PubMed:[16908669](#)).

Cellular Location

Cell membrane; Multi-pass membrane protein {ECO:0000255|PROSITE-ProRule:PRU00351}. Endoplasmic reticulum membrane; Multi-pass membrane protein {ECO:0000255|PROSITE-ProRule:PRU00351}

Tissue Location

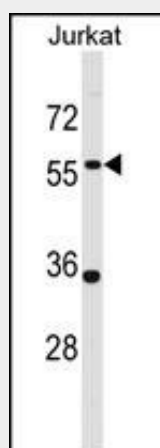
Widely expressed (PubMed:30918116). Highest expression is observed in oocytes and brain (PubMed:30918116). Detected at very low levels in sperm cells (PubMed:30918116)

PANX1 Antibody (Center) - Protocols

Provided below are standard protocols that you may find useful for product applications.

- [Western Blot](#)
- [Blocking Peptides](#)
- [Dot Blot](#)
- [Immunohistochemistry](#)
- [Immunofluorescence](#)
- [Immunoprecipitation](#)
- [Flow Cytometry](#)
- [Cell Culture](#)

PANX1 Antibody (Center) - Images



PANX1 Antibody (Center) (Cat. #AP17112c) western blot analysis in Jurkat cell line lysates (35ug/lane). This demonstrates the PANX1 antibody detected the PANX1 protein (arrow).

PANX1 Antibody (Center) - Background

The protein encoded by this gene belongs to the innexin family. Innexin family members are the structural components of gap junctions. This protein and pannexin 2 are abundantly expressed in

central nerve system (CNS) and are coexpressed in various neuronal populations. Studies in *Xenopus* oocytes suggest that this protein alone and in combination with pannexin 2 may form cell type-specific gap junctions with distinct properties. [provided by RefSeq].

PANX1 Antibody (Center) - References

Chekeni, F.B., et al. *Nature* 467(7317):863-867(2010)
Sridharan, M., et al. *Am. J. Physiol. Heart Circ. Physiol.* 299 (4), H1146-H1152 (2010) :
Ambrosi, C., et al. *J. Biol. Chem.* 285(32):24420-24431(2010)
Bhalla-Gehi, R., et al. *J. Biol. Chem.* 285(12):9147-9160(2010)
Johnatty, S.E., et al. *PLoS Genet.* 6 (7), E1001016 (2010) :