

DHX30 Antibody (N-term)
Affinity Purified Rabbit Polyclonal Antibody (Pab)
Catalog # AP17118a**Specification**

DHX30 Antibody (N-term) - Product Information

Application	WB,E
Primary Accession	O7L2E3
Other Accession	Q5BJS0 , NP_055781.2 , NP_619520.1
Reactivity	Human
Predicted	Rat
Host	Rabbit
Clonality	Polyclonal
Isotype	Rabbit IgG
Calculated MW	133938
Antigen Region	25-53

DHX30 Antibody (N-term) - Additional Information**Gene ID** 22907**Other Names**

Putative ATP-dependent RNA helicase DHX30, DEAH box protein 30, DHX30, DDX30, KIAA0890

Target/Specificity

This DHX30 antibody is generated from rabbits immunized with a KLH conjugated synthetic peptide between 25-53 amino acids from the N-terminal region of human DHX30.

Dilution

WB~~1:1000

E~~Use at an assay dependent concentration.

Format

Purified polyclonal antibody supplied in PBS with 0.09% (W/V) sodium azide. This antibody is purified through a protein A column, followed by peptide affinity purification.

Storage

Maintain refrigerated at 2-8°C for up to 2 weeks. For long term storage store at -20°C in small aliquots to prevent freeze-thaw cycles.

Precautions

DHX30 Antibody (N-term) is for research use only and not for use in diagnostic or therapeutic procedures.

DHX30 Antibody (N-term) - Protein Information**Name** DHX30

Synonyms DDX30, KIAA0890

Function RNA-dependent helicase (PubMed:[29100085](#)). Plays an important role in the assembly of the mitochondrial large ribosomal subunit (PubMed:[25683715](#), PubMed:[29100085](#)). Required for optimal function of the zinc-finger antiviral protein ZC3HAV1 (By similarity). Associates with mitochondrial DNA (PubMed:[18063578](#)). Involved in nervous system development and differentiation through its involvement in the up- regulation of a number of genes which are required for neurogenesis, including GSC, NCAM1, neurogenin, and NEUROD (By similarity).

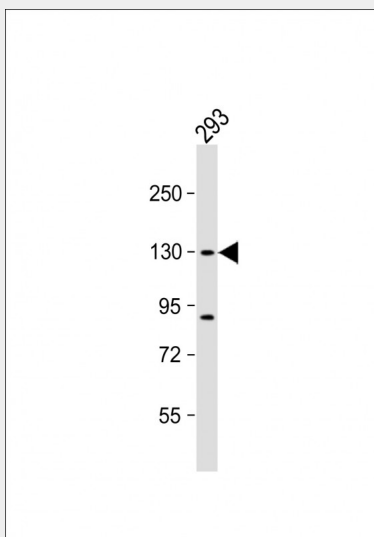
Cellular Location

Cytoplasm. Mitochondrion. Mitochondrion matrix, mitochondrion nucleoid. Note=Localizes to mitochondrial RNA granules found in close proximity to the mitochondrial nucleoids (PubMed:16825194, PubMed:25683715). Relocalizes to stress granules upon heat stress (PubMed:29100085).

DHX30 Antibody (N-term) - Protocols

Provided below are standard protocols that you may find useful for product applications.

- [Western Blot](#)
- [Blocking Peptides](#)
- [Dot Blot](#)
- [Immunohistochemistry](#)
- [Immunofluorescence](#)
- [Immunoprecipitation](#)
- [Flow Cytometry](#)
- [Cell Culture](#)

DHX30 Antibody (N-term) - Images

Anti-DHX30 Antibody (N-term) at 1:1000 dilution + 293 whole cell lysate Lysates/proteins at 20 µg per lane. Secondary Goat Anti-Rabbit IgG, (H+L), Peroxidase conjugated at 1/10000 dilution. Predicted band size : 134 kDa Blocking/Dilution buffer: 5% NFDM/TBST.

DHX30 Antibody (N-term) - Background

DEAD box proteins, characterized by the conserved motif

Asp-Glu-Ala-Asp (DEAD), are putative RNA helicases. They are implicated in a number of cellular processes involving alteration of RNA secondary structure such as translation initiation, nuclear and mitochondrial splicing, and ribosome and spliceosome assembly. Based on their distribution patterns, some members of this DEAD box protein family are believed to be involved in embryogenesis, spermatogenesis, and cellular growth and division. This gene encodes a member of this family. The encoded protein has 97% sequence identity with the mouse HELG protein. Alternatively spliced transcript variants encoding distinct isoforms have been found for this gene.

DHX30 Antibody (N-term) - References

Rose, J.E., et al. Mol. Med. 16 (7-8), 247-253 (2010) :
Zhou, Y., et al. Virology 372(1):97-106(2008)
Bogenhagen, D.F., et al. J. Biol. Chem. 283(6):3665-3675(2008)
Takezawa, S., et al. EMBO J. 26(3):764-774(2007)