

FSD1 Antibody (N-term)
Affinity Purified Rabbit Polyclonal Antibody (Pab)
Catalog # AP17122a**Specification**

FSD1 Antibody (N-term) - Product Information

Application	WB,E
Primary Accession	O9BTV5
Other Accession	NP_077309.1
Reactivity	Human
Host	Rabbit
Clonality	Polyclonal
Isotype	Rabbit IgG
Calculated MW	55820
Antigen Region	94-122

FSD1 Antibody (N-term) - Additional Information**Gene ID** 79187**Other Names**

Fibronectin type III and SPRY domain-containing protein 1, MID1-related protein 1, Microtubule-associated protein GLFND, FSD1, GLFND, MIR1

Target/Specificity

This FSD1 antibody is generated from rabbits immunized with a KLH conjugated synthetic peptide between 94-122 amino acids from the N-terminal region of human FSD1.

Dilution

WB~~1:1000

E~~Use at an assay dependent concentration.

Format

Purified polyclonal antibody supplied in PBS with 0.09% (W/V) sodium azide. This antibody is purified through a protein A column, followed by peptide affinity purification.

Storage

Maintain refrigerated at 2-8°C for up to 2 weeks. For long term storage store at -20°C in small aliquots to prevent freeze-thaw cycles.

Precautions

FSD1 Antibody (N-term) is for research use only and not for use in diagnostic or therapeutic procedures.

FSD1 Antibody (N-term) - Protein Information**Name** FSD1

Synonyms GLFND, MIR1

Function May be involved in microtubule organization and stabilization.

Cellular Location

Cytoplasm, cytoskeleton, microtubule organizing center, centrosome. Nucleus. Cytoplasm. Cleavage furrow. Note=Cell- cycle-dependent association with the centrosome. Colocalizes with a subpopulation of microtubules. Does not associate with microtubules during mitosis but reassociates with microtubules during cytokinesis Localizes to the central portions of a small subset of microtubules in interphase cells and a subpopulation of microtubules in the cleavage furrow, not present in the mitotic spindle

Tissue Location

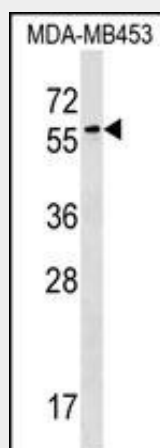
Highly expressed in brain tissues, including cerebellum, cerebral cortex, medulla, occipital pole, frontal lobe, temporal lobe and putamen. Lower expression in spinal cord

FSD1 Antibody (N-term) - Protocols

Provided below are standard protocols that you may find useful for product applications.

- [Western Blot](#)
- [Blocking Peptides](#)
- [Dot Blot](#)
- [Immunohistochemistry](#)
- [Immunofluorescence](#)
- [Immunoprecipitation](#)
- [Flow Cytometry](#)
- [Cell Culture](#)

FSD1 Antibody (N-term) - Images



FSD1 Antibody (N-term) (Cat. #AP17122a) western blot analysis in MDA-MB453 cell line lysates (35ug/lane). This demonstrates the FSD1 antibody detected the FSD1 protein (arrow).

FSD1 Antibody (N-term) - Background

This gene encodes a centrosome associated protein that is characterized by an N-terminal coiled-coil region downstream of B-box (BBC) domain, a central fibronectin type III domain, and a C-terminal repeats in splA and RyR (SPRY) domain. The encoded

protein associates with a subset of microtubules and may be involved in the stability and organization of microtubules during cytokinesis.

FSD1 Antibody (N-term) - References

Manabe, R., et al. Curr. Biol. 12(22):1946-1951(2002)

Stein, P.A., et al. J. Cell. Sci. 115 (PT 17), 3389-3402 (2002) :

Carim-Todd, L., et al. Biochim. Biophys. Acta 1518 (1-2), 200-203 (2001) :