

**CDC42EP2 Antibody (C-term)**  
**Affinity Purified Rabbit Polyclonal Antibody (Pab)**  
**Catalog # AP17133b****Specification**

---

**CDC42EP2 Antibody (C-term) - Product Information**

Application	WB,E
Primary Accession	<a href="#">O14613</a>
Other Accession	<a href="#">NP_006770.1</a>
Reactivity	Human, Mouse
Host	Rabbit
Clonality	Polyclonal
Isotype	Rabbit IgG
Calculated MW	22484
Antigen Region	133-160

**CDC42EP2 Antibody (C-term) - Additional Information****Gene ID** 10435**Other Names**

Cdc42 effector protein 2, Binder of Rho GTPases 1, CDC42EP2, BORG1, CEP2

**Target/Specificity**

This CDC42EP2 antibody is generated from rabbits immunized with a KLH conjugated synthetic peptide between 133-160 amino acids from the C-terminal region of human CDC42EP2.

**Dilution**

WB~~1:1000

E~~Use at an assay dependent concentration.

**Format**

Purified polyclonal antibody supplied in PBS with 0.09% (W/V) sodium azide. This antibody is purified through a protein A column, followed by peptide affinity purification.

**Storage**

Maintain refrigerated at 2-8°C for up to 2 weeks. For long term storage store at -20°C in small aliquots to prevent freeze-thaw cycles.

**Precautions**

CDC42EP2 Antibody (C-term) is for research use only and not for use in diagnostic or therapeutic procedures.

**CDC42EP2 Antibody (C-term) - Protein Information****Name** CDC42EP2**Synonyms** BORG1, CEP2

**Function** Probably involved in the organization of the actin cytoskeleton. May act downstream of CDC42 to induce actin filament assembly leading to cell shape changes. Induces pseudopodia formation in fibroblasts in a CDC42-dependent manner.

**Cellular Location**

Endomembrane system; Peripheral membrane protein. Cytoplasm, cytoskeleton

**Tissue Location**

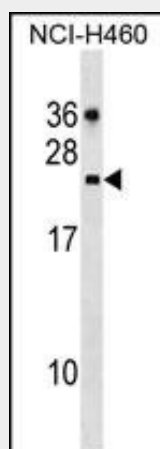
Highly expressed in the heart. Weakly expressed in the pancreas and liver.

**CDC42EP2 Antibody (C-term) - Protocols**

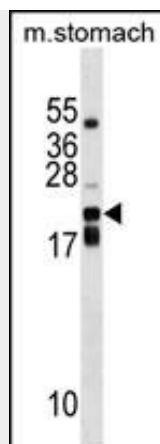
Provided below are standard protocols that you may find useful for product applications.

- [Western Blot](#)
- [Blocking Peptides](#)
- [Dot Blot](#)
- [Immunohistochemistry](#)
- [Immunofluorescence](#)
- [Immunoprecipitation](#)
- [Flow Cytometry](#)
- [Cell Culture](#)

**CDC42EP2 Antibody (C-term) - Images**



CDC42EP2 Antibody (C-term) (Cat. #AP17133b) western blot analysis in NCI-H460 cell line lysates (35ug/lane). This demonstrates the CDC42EP2 antibody detected the CDC42EP2 protein (arrow).



CDC42EP2 Antibody (C-term) (Cat. #AP17133b) western blot analysis in mouse stomach tissue lysates (35ug/lane). This demonstrates the CDC42EP2 antibody detected the CDC42EP2 protein (arrow).

### **CDC42EP2 Antibody (C-term) - Background**

CDC42, a small Rho GTPase, regulates the formation of F-actin-containing structures through its interaction with the downstream effector proteins. The protein encoded by this gene is a member of the Borg family of CDC42 effector proteins. Borg family proteins contain a CRIB (Cdc42/Rac interactive-binding) domain. They bind to, and negatively regulate the function of, CDC42. Coexpression of this protein with dominant negative mutant CDC42 protein in fibroblast was found to induce pseudopodia formation, which suggested a role of this protein in actin filament assembly and cell shape control.

### **CDC42EP2 Antibody (C-term) - References**

- Xue, Y., et al. Int. J. Cancer 118(12):2965-2972(2006)
- Joberty, G., et al. Nat. Cell Biol. 3(10):861-866(2001)
- Hirsch, D.S., et al. J. Biol. Chem. 276(2):875-883(2001)
- Joberty, G., et al. Mol. Cell. Biol. 19(10):6585-6597(1999)
- Burbelo, P.D., et al. Proc. Natl. Acad. Sci. U.S.A. 96(16):9083-9088(1999)