

**CHID1 Antibody (C-term)**  
**Affinity Purified Rabbit Polyclonal Antibody (Pab)**  
**Catalog # AP17135b****Specification**

---

**CHID1 Antibody (C-term) - Product Information**

Application	WB,E
Primary Accession	<a href="#">O9BWS9</a>
Other Accession	<a href="#">NP_001136146.1</a> , <a href="#">NP_001136147.1</a>
Reactivity	Human
Host	Rabbit
Clonality	Polyclonal
Isotype	Rabbit IgG
Calculated MW	44941
Antigen Region	287-315

**CHID1 Antibody (C-term) - Additional Information****Gene ID** 66005**Other Names**

Chitinase domain-containing protein 1, Stabilin-1-interacting chitinase-like protein, SI-CLP, CHID1

**Target/Specificity**

This CHID1 antibody is generated from rabbits immunized with a KLH conjugated synthetic peptide between 287-315 amino acids from the C-terminal region of human CHID1.

**Dilution**

WB~~1:1000

E~~Use at an assay dependent concentration.

**Format**

Purified polyclonal antibody supplied in PBS with 0.09% (W/V) sodium azide. This antibody is purified through a protein A column, followed by peptide affinity purification.

**Storage**

Maintain refrigerated at 2-8°C for up to 2 weeks. For long term storage store at -20°C in small aliquots to prevent freeze-thaw cycles.

**Precautions**

CHID1 Antibody (C-term) is for research use only and not for use in diagnostic or therapeutic procedures.

**CHID1 Antibody (C-term) - Protein Information****Name** CHID1**Function** Saccharide- and LPS-binding protein with possible roles in pathogen sensing and

endotoxin neutralization. Ligand-binding specificity relates to the length of the oligosaccharides, with preference for chitotetraose (in vitro).

**Cellular Location**

Secreted. Lysosome

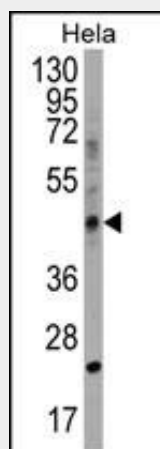
**Tissue Location**

Expressed in cells of monocytic, T, B and epithelial origin.

**CHID1 Antibody (C-term) - Protocols**

Provided below are standard protocols that you may find useful for product applications.

- [Western Blot](#)
- [Blocking Peptides](#)
- [Dot Blot](#)
- [Immunohistochemistry](#)
- [Immunofluorescence](#)
- [Immunoprecipitation](#)
- [Flow Cytometry](#)
- [Cell Culture](#)

**CHID1 Antibody (C-term) - Images**

CHID1 Antibody (C-term) (Cat. #AP17135b) western blot analysis in HeLa cell line lysates (35ug/lane). This demonstrates the CHID1 antibody detected the CHID1 protein (arrow).

**CHID1 Antibody (C-term) - Background**

Saccharide- and LPS-binding protein with possible roles in pathogen sensing and endotoxin neutralization. Ligand-binding specificity relates to the length of the oligosaccharides, with preference for chitotetraose (in vitro).

**CHID1 Antibody (C-term) - References**

Rose, J.E., et al. Mol. Med. 16 (7-8), 247-253 (2010) :  
Meng, G., et al. Protein Pept. Lett. 16(3):336-338(2009)  
Lamesch, P., et al. Genomics 89(3):307-315(2007)  
Kzhyshkowska, J., et al. Blood 107(8):3221-3228(2006)