

CRYZL1 Antibody (C-term)
Affinity Purified Rabbit Polyclonal Antibody (Pab)
Catalog # AP17138b**Specification**

CRYZL1 Antibody (C-term) - Product Information

Application	WB,E
Primary Accession	O95825
Other Accession	Q59A28 , NP_665857.2
Reactivity	Human
Predicted	Bovine
Host	Rabbit
Clonality	Polyclonal
Isotype	Rabbit IgG
Calculated MW	38697
Antigen Region	296-323

CRYZL1 Antibody (C-term) - Additional Information**Gene ID** 9946**Other Names**

Quinone oxidoreductase-like protein 1, 1---, Protein 4P11, Quinone oxidoreductase homolog 1, QOH-1, Zeta-crystallin homolog, CRYZL1, 4P11

Target/Specificity

This CRYZL1 antibody is generated from rabbits immunized with a KLH conjugated synthetic peptide between 296-323 amino acids from the C-terminal region of human CRYZL1.

Dilution

WB~~1:1000

E~~Use at an assay dependent concentration.

Format

Purified polyclonal antibody supplied in PBS with 0.09% (W/V) sodium azide. This antibody is purified through a protein A column, followed by peptide affinity purification.

Storage

Maintain refrigerated at 2-8°C for up to 2 weeks. For long term storage store at -20°C in small aliquots to prevent freeze-thaw cycles.

Precautions

CRYZL1 Antibody (C-term) is for research use only and not for use in diagnostic or therapeutic procedures.

CRYZL1 Antibody (C-term) - Protein Information**Name** CRYZL1

Synonyms 4P11, FERRY4 {ECO:0000303|PubMed:3726790}

Function Component of the FERRY complex (Five-subunit Endosomal Rab5 and RNA/ribosome intermediary) (PubMed:[37267905](#), PubMed:[37267906](#)). The FERRY complex directly interacts with mRNAs and RAB5A, and functions as a RAB5A effector involved in the localization and the distribution of specific mRNAs most likely by mediating their endosomal transport. The complex recruits mRNAs and ribosomes to early endosomes through direct mRNA-interaction (PubMed:[37267905](#)).

Cellular Location

Early endosome.

Tissue Location

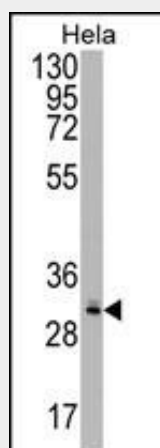
Ubiquitous.

CRYZL1 Antibody (C-term) - Protocols

Provided below are standard protocols that you may find useful for product applications.

- [Western Blot](#)
- [Blocking Peptides](#)
- [Dot Blot](#)
- [Immunohistochemistry](#)
- [Immunofluorescence](#)
- [Immunoprecipitation](#)
- [Flow Cytometry](#)
- [Cell Culture](#)

CRYZL1 Antibody (C-term) - Images



CRYZL1 Antibody (C-term) (Cat. #AP17138b) western blot analysis in HeLa cell line lysates (35ug/lane). This demonstrates the CRYZL1 antibody detected the CRYZL1 protein (arrow).

CRYZL1 Antibody (C-term) - Background

This gene encodes a protein that has sequence similarity to zeta crystallin, also known as quinone oxidoreductase. This zeta crystallin-like protein also contains an NAD(P)H binding site. Alternatively spliced transcript variants have been observed but their full-length nature has not been completely determined.

CRYZL1 Antibody (C-term) - References

Fernandez, M.R., et al. Cell. Mol. Life Sci. 64(11):1419-1427(2007)
Hu, Y.H., et al. BMC Genomics 7, 155 (2006) :
Kim, M.Y., et al. Genomics 57(1):156-159(1999)