

ID3 Antibody (N-term)
Affinity Purified Rabbit Polyclonal Antibody (Pab)
Catalog # AP17144a**Specification**

ID3 Antibody (N-term) - Product Information

Application	WB,E
Primary Accession	Q02535
Other Accession	NP_002158.3
Reactivity	Human, Mouse
Host	Rabbit
Clonality	Polyclonal
Isotype	Rabbit IgG
Calculated MW	12999
Antigen Region	10-37

ID3 Antibody (N-term) - Additional Information**Gene ID** 3399**Other Names**

DNA-binding protein inhibitor ID-3, Class B basic helix-loop-helix protein 25, bHLHb25, Helix-loop-helix protein HEIR-1, ID-like protein inhibitor HLH 1R21, Inhibitor of DNA binding 3, Inhibitor of differentiation 3, ID3, 1R21, BHLHB25, HEIR1

Target/Specificity

This ID3 antibody is generated from rabbits immunized with a KLH conjugated synthetic peptide between 10-37 amino acids from the N-terminal region of human ID3.

Dilution

WB~~1:1000

E~~Use at an assay dependent concentration.

Format

Purified polyclonal antibody supplied in PBS with 0.09% (W/V) sodium azide. This antibody is purified through a protein A column, followed by peptide affinity purification.

Storage

Maintain refrigerated at 2-8°C for up to 2 weeks. For long term storage store at -20°C in small aliquots to prevent freeze-thaw cycles.

Precautions

ID3 Antibody (N-term) is for research use only and not for use in diagnostic or therapeutic procedures.

ID3 Antibody (N-term) - Protein Information**Name** ID3

Synonyms 1R21, BHLHB25, HEIR1

Function Transcriptional regulator (lacking a basic DNA binding domain) which negatively regulates the basic helix-loop-helix (bHLH) transcription factors by forming heterodimers and inhibiting their DNA binding and transcriptional activity. Implicated in regulating a variety of cellular processes, including cellular growth, senescence, differentiation, apoptosis, angiogenesis, and neoplastic transformation. Involved in myogenesis by inhibiting skeletal muscle and cardiac myocyte differentiation and promoting muscle precursor cells proliferation. Inhibits the binding of E2A-containing protein complexes to muscle creatine kinase E-box enhancer. Regulates the circadian clock by repressing the transcriptional activator activity of the CLOCK-BMAL1 heterodimer.

Cellular Location

Nucleus.

Tissue Location

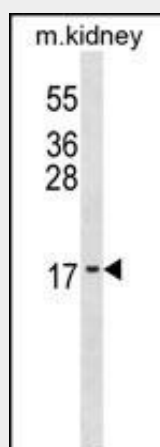
Expressed abundantly in lung, kidney and adrenal gland, but not in adult brain

ID3 Antibody (N-term) - Protocols

Provided below are standard protocols that you may find useful for product applications.

- [Western Blot](#)
- [Blocking Peptides](#)
- [Dot Blot](#)
- [Immunohistochemistry](#)
- [Immunofluorescence](#)
- [Immunoprecipitation](#)
- [Flow Cytometry](#)
- [Cell Culture](#)

ID3 Antibody (N-term) - Images



ID3 Antibody (N-term) (Cat. #AP17144a) western blot analysis in mouse kidney tissue lysates (35ug/lane). This demonstrates the ID3 antibody detected the ID3 protein (arrow).

ID3 Antibody (N-term) - Background

Members of the ID family of helix-loop-helix (HLH) proteins lack a basic DNA-binding domain and inhibit transcription

through formation of nonfunctional dimers that are incapable of binding to DNA.

ID3 Antibody (N-term) - References

Shuno, Y., et al. J. Surg. Res. 161(1):76-82(2010)
Doran, A.C., et al. Circ. Res. 106(7):1303-1311(2010)
McGeachie, M., et al. Circulation 120(24):2448-2454(2009)
Higgins, S., et al. Endocrinology 150(9):4044-4055(2009)
Trabosh, V.A., et al. Exp. Dermatol. 18(4):387-395(2009)