

CEACAM7 Antibody (Center)
Affinity Purified Rabbit Polyclonal Antibody (Pab)
Catalog # AP17149C**Specification**

CEACAM7 Antibody (Center) - Product Information

Application	WB, IHC-P,E
Primary Accession	Q14002
Other Accession	NP_008821.1
Reactivity	Human
Host	Rabbit
Clonality	Polyclonal
Isotype	Rabbit IgG
Antigen Region	112-140

CEACAM7 Antibody (Center) - Additional Information**Gene ID** 1087**Other Names**

Carcinoembryonic antigen-related cell adhesion molecule 7, Carcinoembryonic antigen CGM2, CEACAM7, CGM2

Target/Specificity

This CEACAM7 antibody is generated from rabbits immunized with a KLH conjugated synthetic peptide between 112-140 amino acids from the Central region of human CEACAM7.

Dilution

WB~~1:1000

IHC-P~~1:10~50

Format

Purified polyclonal antibody supplied in PBS with 0.09% (W/V) sodium azide. This antibody is purified through a protein A column, followed by peptide affinity purification.

Storage

Maintain refrigerated at 2-8°C for up to 2 weeks. For long term storage store at -20°C in small aliquots to prevent freeze-thaw cycles.

Precautions

CEACAM7 Antibody (Center) is for research use only and not for use in diagnostic or therapeutic procedures.

CEACAM7 Antibody (Center) - Protein Information**Name** CEACAM7 ([HGNC:1819](#))**Synonyms** CGM2

Cellular Location

Cell membrane; Lipid-anchor, GPI- anchor. Apical cell membrane. Note=Localized to the apical glycocalyx surface.

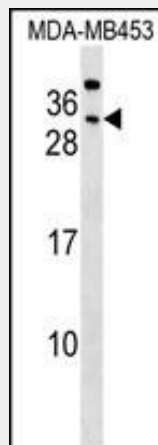
Tissue Location

Expressed in columnar epithelial cells of the colon (at protein level) (PubMed:10436421). Strongly down-regulated in colonic adenocarcinomas.

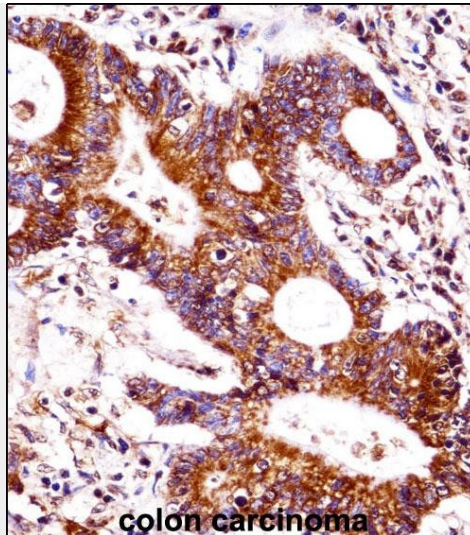
CEACAM7 Antibody (Center) - Protocols

Provided below are standard protocols that you may find useful for product applications.

- [Western Blot](#)
- [Blocking Peptides](#)
- [Dot Blot](#)
- [Immunohistochemistry](#)
- [Immunofluorescence](#)
- [Immunoprecipitation](#)
- [Flow Cytometry](#)
- [Cell Culture](#)

CEACAM7 Antibody (Center) - Images

CEACAM7 Antibody (Center) (Cat. #AP17149c) western blot analysis in MDA-MB453 cell line lysates (35ug/lane). This demonstrates the CEACAM7 antibody detected the CEACAM7 protein (arrow).



CEACAM7 Antibody (Center) (AP17149c) immunohistochemistry analysis in formalin fixed and paraffin embedded human colon carcinoma followed by peroxidase conjugation of the secondary antibody and DAB staining. This data demonstrates the use of CEACAM7 Antibody (Center) for immunohistochemistry. Clinical relevance has not been evaluated.

CEACAM7 Antibody (Center) - Background

CEA-related cell adhesion molecule 7 (CEACAM7, CGM2) belongs to the carcinoembryonic antigen (CEA) family. It encodes a glycosyl phosphatidyl inositol (GPI)-linked glycoprotein which is only found on the apical surface of highly differentiated epithelial cells adult colon and on a small epithelial cell population in pancreatic ducts. CEACAM7 expression is completely lost upon malignant transformation already in hyperplastic polyps and early adenomas as well as in adenocarcinomas of the colon. Like all members of the CEACAM family, it consists of a single N domain, with structural homology to the immunoglobulin variable domains, followed by one immunoglobulin constantlike A domain.

CEACAM7 Antibody (Center) - References

Messick, C.A., et al. Surgery 147(5):713-719(2010)
Douard, R., et al. Surgery 139(4):556-562(2006)
Zhang, Z., et al. Protein Sci. 13(10):2819-2824(2004)
Grimwood, J., et al. Nature 428(6982):529-535(2004)
Scholzel, S., et al. Am. J. Pathol. 156(2):595-605(2000)