

PPT1 Antibody (Center)
Affinity Purified Rabbit Polyclonal Antibody (Pab)
Catalog # AP17150c

Specification

PPT1 Antibody (Center) - Product Information

Application	WB,E
Primary Accession	P50897
Other Accession	Q8HXR6 , NP_001136076.1 , NP_000301.1
Reactivity	Human
Predicted	Monkey
Host	Rabbit
Clonality	Polyclonal
Isotype	Rabbit IgG
Calculated MW	34193
Antigen Region	189-217

PPT1 Antibody (Center) - Additional Information

Gene ID 5538

Other Names

Palmitoyl-protein thioesterase 1, PPT-1, Palmitoyl-protein hydrolase 1, PPT1, PPT

Target/Specificity

This PPT1 antibody is generated from rabbits immunized with a KLH conjugated synthetic peptide between 189-217 amino acids from the Central region of human PPT1.

Dilution

WB~~1:1000

E~~Use at an assay dependent concentration.

Format

Purified polyclonal antibody supplied in PBS with 0.09% (W/V) sodium azide. This antibody is purified through a protein A column, followed by peptide affinity purification.

Storage

Maintain refrigerated at 2-8°C for up to 2 weeks. For long term storage store at -20°C in small aliquots to prevent freeze-thaw cycles.

Precautions

PPT1 Antibody (Center) is for research use only and not for use in diagnostic or therapeutic procedures.

PPT1 Antibody (Center) - Protein Information

Name PPT1

Synonyms CLN1 {ECO:0000303|PubMed:19941651}, PPT

Function Has thioesterase activity against fatty acid thioesters with 14 -18 carbons, including palmitoyl-CoA, S-palmitoyl-N- acetylcysteamine, and palmitoylated proteins (PubMed:[12855696](#), PubMed:[26731412](#), PubMed:[8816748](#)). In contrast to PPT2, PPT1 can hydrolyze palmitoylated proteins and palmitoylcysteine (PubMed:[12855696](#)).

Cellular Location

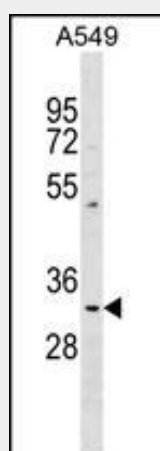
Lysosome. Secreted Golgi apparatus. Endoplasmic reticulum

PPT1 Antibody (Center) - Protocols

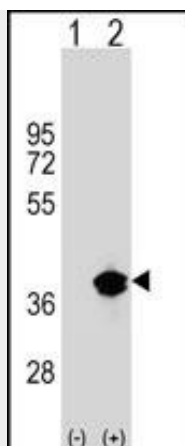
Provided below are standard protocols that you may find useful for product applications.

- [Western Blot](#)
- [Blocking Peptides](#)
- [Dot Blot](#)
- [Immunohistochemistry](#)
- [Immunofluorescence](#)
- [Immunoprecipitation](#)
- [Flow Cytometry](#)
- [Cell Culture](#)

PPT1 Antibody (Center) - Images



PPT1 Antibody (Center) (Cat. #AP17150c) western blot analysis in A549 cell line lysates (35ug/lane). This demonstrates the PPT1 antibody detected the PPT1 protein (arrow).



Western blot analysis of PPT1 (arrow) using rabbit polyclonal PPT1 Antibody (Center) (Cat. #AP17150c). 293 cell lysates (2 ug/lane) either nontransfected (Lane 1) or transiently transfected (Lane 2) with the PPT1 gene.

PPT1 Antibody (Center) - Background

The protein encoded by this gene is a small glycoprotein involved in the catabolism of lipid-modified proteins during lysosomal degradation. The encoded enzyme removes thioester-linked fatty acyl groups such as palmitate from cysteine residues. Defects in this gene are a cause of infantile neuronal ceroid lipofuscinosis 1 (CLN1, or INCL) and neuronal ceroid lipofuscinosis 4 (CLN4). Two transcript variants encoding different isoforms have been found for this gene.

PPT1 Antibody (Center) - References

Ohno, K., et al. Brain Dev. 32(7):524-530(2010)
Simonati, A., et al. Pediatr. Neurol. 40(4):271-276(2009)
Martins-de-Souza, D., et al. Eur Arch Psychiatry Clin Neurosci 259(3):151-163(2009)
Kousi, M., et al. Brain 132 (PT 3), 810-819 (2009) :
Gregorio, S.P., et al. Psychiatry Res 165 (1-2), 1-9 (2009) :