

CKS1B Antibody (Center)
Affinity Purified Rabbit Polyclonal Antibody (Pab)
Catalog # AP17157c**Specification**

CKS1B Antibody (Center) - Product Information

Application	WB,E
Primary Accession	P61024
Other Accession	P61025 , Q0P5A5 , NP_001817.1
Reactivity	Human
Predicted	Bovine, Mouse
Host	Rabbit
Clonality	Polyclonal
Isotype	Rabbit IgG
Calculated MW	9660
Antigen Region	3-30

CKS1B Antibody (Center) - Additional Information**Gene ID** 1163**Other Names**

Cyclin-dependent kinases regulatory subunit 1, CKS-1, CKS1B, CKS1

Target/Specificity

This CKS1B antibody is generated from rabbits immunized with a KLH conjugated synthetic peptide between 3-30 amino acids from the Central region of human CKS1B.

Dilution

WB~~1:1000

Format

Purified polyclonal antibody supplied in PBS with 0.09% (W/V) sodium azide. This antibody is purified through a protein A column, followed by peptide affinity purification.

Storage

Maintain refrigerated at 2-8°C for up to 2 weeks. For long term storage store at -20°C in small aliquots to prevent freeze-thaw cycles.

Precautions

CKS1B Antibody (Center) is for research use only and not for use in diagnostic or therapeutic procedures.

CKS1B Antibody (Center) - Protein Information**Name** CKS1B**Synonyms** CKS1

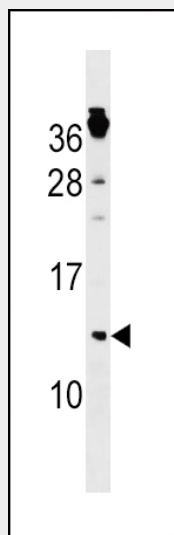
Function Binds to the catalytic subunit of the cyclin dependent kinases and is essential for their biological function.

CKS1B Antibody (Center) - Protocols

Provided below are standard protocols that you may find useful for product applications.

- [Western Blot](#)
- [Blocking Peptides](#)
- [Dot Blot](#)
- [Immunohistochemistry](#)
- [Immunofluorescence](#)
- [Immunoprecipitation](#)
- [Flow Cytometry](#)
- [Cell Culture](#)

CKS1B Antibody (Center) - Images



CKS1B Antibody (Center) (Cat. #AP17157c) western blot analysis in NCI-H292 cell line lysates (35ug/lane). This demonstrates the CKS1B antibody detected the CKS1B protein (arrow).

CKS1B Antibody (Center) - Background

CKS1B protein binds to the catalytic subunit of the cyclin dependent kinases and is essential for their biological function. The CKS1B mRNA is found to be expressed in different patterns through the cell cycle in HeLa cells, which reflects a specialized role for the encoded protein. At least two transcript variants have been identified for this gene, and it appears that only one of them encodes a protein.

CKS1B Antibody (Center) - References

Akyurek, N., et al. Hum. Pathol. 41(10):1448-1455(2010)
van Zon, W., et al. J. Cell Biol. 190(4):587-602(2010)
Rose, J.E., et al. Mol. Med. 16 (7-8), 247-253 (2010) :
Huang, C.W., et al. Ann. Surg. Oncol. 17(3):907-922(2010)

Shen, D.Y., et al. Liver Int. 30(1):119-125(2010)