

DOK5 Antibody (N-term)
Affinity Purified Rabbit Polyclonal Antibody (Pab)
Catalog # AP17160a**Specification**

DOK5 Antibody (N-term) - Product Information

Application	WB,E
Primary Accession	O9P104
Other Accession	O91ZM9 , NP_060901.2
Reactivity	Human
Predicted	Mouse
Host	Rabbit
Clonality	Polyclonal
Isotype	Rabbit IgG
Calculated MW	35464
Antigen Region	21-49

DOK5 Antibody (N-term) - Additional Information**Gene ID** 55816**Other Names**

Docking protein 5, Downstream of tyrosine kinase 5, Insulin receptor substrate 6, IRS-6, IRS6, DOK5, C20orf180

Target/Specificity

This DOK5 antibody is generated from rabbits immunized with a KLH conjugated synthetic peptide between 21-49 amino acids from the N-terminal region of human DOK5.

Dilution

WB~~1:1000

E~~Use at an assay dependent concentration.

Format

Purified polyclonal antibody supplied in PBS with 0.09% (W/V) sodium azide. This antibody is purified through a protein A column, followed by peptide affinity purification.

Storage

Maintain refrigerated at 2-8°C for up to 2 weeks. For long term storage store at -20°C in small aliquots to prevent freeze-thaw cycles.

Precautions

DOK5 Antibody (N-term) is for research use only and not for use in diagnostic or therapeutic procedures.

DOK5 Antibody (N-term) - Protein Information**Name** DOK5

Synonyms C20orf180

Function DOK proteins are enzymatically inert adaptor or scaffolding proteins. They provide a docking platform for the assembly of multimolecular signaling complexes. DOK5 functions in RET-mediated neurite outgrowth and plays a positive role in activation of the MAP kinase pathway. Putative link with downstream effectors of RET in neuronal differentiation.

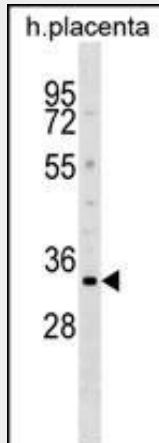
Tissue Location

Highest expression in skeletal muscle, lower in brain, heart and kidney. Also detected in activated peripheral blood T- lymphocytes.

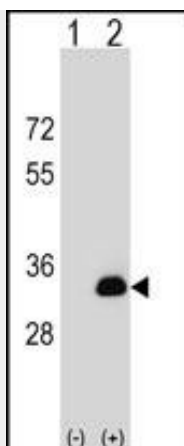
DOK5 Antibody (N-term) - Protocols

Provided below are standard protocols that you may find useful for product applications.

- [Western Blot](#)
- [Blocking Peptides](#)
- [Dot Blot](#)
- [Immunohistochemistry](#)
- [Immunofluorescence](#)
- [Immunoprecipitation](#)
- [Flow Cytometry](#)
- [Cell Culture](#)

DOK5 Antibody (N-term) - Images

DOK5 Antibody (N-term) (Cat. #AP17160a) western blot analysis in human placenta tissue lysates (35ug/lane). This demonstrates the DOK5 antibody detected the DOK5 protein (arrow).



Western blot analysis of DOK5 (arrow) using rabbit polyclonal DOK5 Antibody (N-term) (Cat. #AP17160a). 293 cell lysates (2 ug/lane) either nontransfected (Lane 1) or transiently transfected (Lane 2) with the DOK5 gene.

DOK5 Antibody (N-term) - Background

The protein encoded by this gene is a member of the DOK family of membrane proteins, which are adapter proteins involved in signal transduction. The encoded protein interacts with phosphorylated receptor tyrosine kinases to mediate neurite outgrowth and activation of the MAP kinase pathway. In contrast to other DOK family proteins, this protein does not interact with RASGAP.

DOK5 Antibody (N-term) - References

Liu, X., et al. J Am Acad Child Adolesc Psychiatry 49(1):33-41(2010)
Tabassum, R., et al. BMC Med. Genet. 11, 35 (2010) :
Shi, L., et al. Cell. Signal. 18(11):1995-2003(2006)
Cai, D., et al. J. Biol. Chem. 278(28):25323-25330(2003)
Favre, C., et al. Genes Immun. 4(1):40-45(2003)