

UBE2G1 Antibody (C-term)
Affinity Purified Rabbit Polyclonal Antibody (Pab)
Catalog # AP17162b**Specification**

UBE2G1 Antibody (C-term) - Product Information

Application	WB,E
Primary Accession	P62253
Other Accession	P62255 , P62254 , Q4R5Y8 , NP_003333.1
Reactivity	Human
Predicted	Monkey, Mouse, Rat
Host	Rabbit
Clonality	Polyclonal
Isotype	Rabbit IgG
Calculated MW	19509
Antigen Region	127-155

UBE2G1 Antibody (C-term) - Additional Information**Gene ID** 7326**Other Names**

Ubiquitin-conjugating enzyme E2 G1, E217K, UBC7, Ubiquitin carrier protein G1, Ubiquitin-protein ligase G1, Ubiquitin-conjugating enzyme E2 G1, N-terminally processed, UBE2G1, UBE2G

Target/Specificity

This UBE2G1 antibody is generated from rabbits immunized with a KLH conjugated synthetic peptide between 127-155 amino acids from the C-terminal region of human UBE2G1.

Dilution

WB~~1:1000

Format

Purified polyclonal antibody supplied in PBS with 0.09% (W/V) sodium azide. This antibody is purified through a protein A column, followed by peptide affinity purification.

Storage

Maintain refrigerated at 2-8°C for up to 2 weeks. For long term storage store at -20°C in small aliquots to prevent freeze-thaw cycles.

Precautions

UBE2G1 Antibody (C-term) is for research use only and not for use in diagnostic or therapeutic procedures.

UBE2G1 Antibody (C-term) - Protein Information**Name** UBE2G1

Synonyms UBE2G

Function Accepts ubiquitin from the E1 complex and catalyzes its covalent attachment to other proteins. In vitro catalyzes 'Lys-48'-, as well as 'Lys-63'-linked polyubiquitination. May be involved in degradation of muscle-specific proteins. Mediates polyubiquitination of CYP3A4.

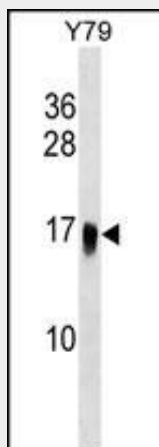
Tissue Location

Widely expressed, mainly in skeletal muscle.

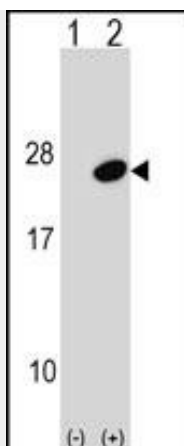
UBE2G1 Antibody (C-term) - Protocols

Provided below are standard protocols that you may find useful for product applications.

- [Western Blot](#)
- [Blocking Peptides](#)
- [Dot Blot](#)
- [Immunohistochemistry](#)
- [Immunofluorescence](#)
- [Immunoprecipitation](#)
- [Flow Cytometry](#)
- [Cell Culture](#)

UBE2G1 Antibody (C-term) - Images

UBE2G1 Antibody (C-term) (Cat. #AP17162b) western blot analysis in Y79 cell line lysates (35ug/lane). This demonstrates the UBE2G1 antibody detected the UBE2G1 protein (arrow).



Western blot analysis of UBE2G1 (arrow) using rabbit polyclonal UBE2G1 Antibody (C-term) (Cat. #AP17162b). 293 cell lysates (2 ug/lane) either nontransfected (Lane 1) or transiently transfected (Lane 2) with the UBE2G1 gene.

UBE2G1 Antibody (C-term) - Background

The modification of proteins with ubiquitin is an important cellular mechanism for targeting abnormal or short-lived proteins for degradation. Ubiquitination involves at least three classes of enzymes: ubiquitin-activating enzymes, or E1s, ubiquitin-conjugating enzymes, or E2s, and ubiquitin-protein ligases, or E3s. This gene encodes a member of the E2 ubiquitin-conjugating enzyme family and catalyzes the covalent attachment of ubiquitin to other proteins. The protein may be involved in degradation of muscle-specific proteins. [provided by RefSeq].

UBE2G1 Antibody (C-term) - References

Hassink, G., et al. Biochem. J. 388 (PT 2), 647-655 (2005) :
Kim, B.W., et al. Mol. Endocrinol. 17(12):2603-2612(2003)
Gevaert, K., et al. Nat. Biotechnol. 21(5):566-569(2003)
Imai, Y., et al. Cell 105(7):891-902(2001)
Tiwari, S., et al. J. Biol. Chem. 276(19):16193-16200(2001)