

TBX20 Antibody (C-term)
Affinity Purified Rabbit Polyclonal Antibody (Pab)
Catalog # AP17164b**Specification**

TBX20 Antibody (C-term) - Product Information

Application	WB,E
Primary Accession	O9UMR3
Other Accession	NP_001159692.1
Reactivity	Human, Mouse
Host	Rabbit
Clonality	Polyclonal
Isotype	Rabbit IgG
Calculated MW	49232
Antigen Region	308-335

TBX20 Antibody (C-term) - Additional Information**Gene ID** 57057**Other Names**

T-box transcription factor TBX20, T-box protein 20, TBX20

Target/Specificity

This TBX20 antibody is generated from rabbits immunized with a KLH conjugated synthetic peptide between 308-335 amino acids from the C-terminal region of human TBX20.

Dilution

WB~~1:1000

E~~Use at an assay dependent concentration.

Format

Purified polyclonal antibody supplied in PBS with 0.09% (W/V) sodium azide. This antibody is purified through a protein A column, followed by peptide affinity purification.

Storage

Maintain refrigerated at 2-8°C for up to 2 weeks. For long term storage store at -20°C in small aliquots to prevent freeze-thaw cycles.

Precautions

TBX20 Antibody (C-term) is for research use only and not for use in diagnostic or therapeutic procedures.

TBX20 Antibody (C-term) - Protein Information**Name** TBX20**Function** Acts as a transcriptional activator and repressor required for cardiac development and

may have key roles in the maintenance of functional and structural phenotypes in adult heart.

Cellular Location

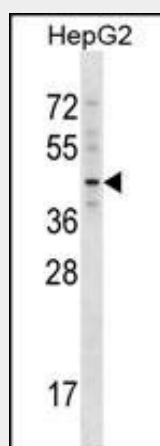
Nucleus {ECO:0000255|PROSITE-ProRule:PRU00201}.

TBX20 Antibody (C-term) - Protocols

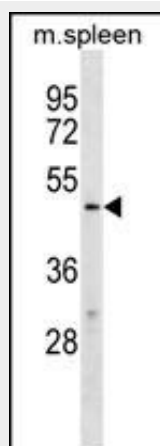
Provided below are standard protocols that you may find useful for product applications.

- [Western Blot](#)
- [Blocking Peptides](#)
- [Dot Blot](#)
- [Immunohistochemistry](#)
- [Immunofluorescence](#)
- [Immunoprecipitation](#)
- [Flow Cytometry](#)
- [Cell Culture](#)

TBX20 Antibody (C-term) - Images



TBX20 Antibody (C-term) (Cat. #AP17164b) western blot analysis in HepG2 cell line lysates (35ug/lane). This demonstrates the TBX20 antibody detected the TBX20 protein (arrow).



TBX20 Antibody (C-term) (Cat. #AP17164b) western blot analysis in mouse spleen tissue lysates (35ug/lane). This demonstrates the TBX20 antibody detected the TBX20 protein (arrow).

TBX20 Antibody (C-term) - Background

This gene encodes a T-box family member. The T-box family members share a common DNA binding domain, termed the T-box, and they are transcription factors involved in the regulation of developmental processes. This gene is essential for heart development. Mutations in this gene are associated with diverse cardiac pathologies, including defects in septation, valvulogenesis and cardiomyopathy. Alternatively spliced transcript variants encoding different isoforms have been found for this gene.

TBX20 Antibody (C-term) - References

Ichikawa, S., et al. J. Bone Miner. Res. 25(8):1821-1829(2010)
Posch, M.G., et al. J. Med. Genet. 47(4):230-235(2010)
Macindoe, I., et al. J. Mol. Biol. 389(3):606-618(2009)
Liu, C., et al. Eur J Med Genet 51(6):580-587(2008)
Hammer, S., et al. J. Cell. Biochem. 104(3):1022-1033(2008)