

**MYRIP Antibody (C-term)**  
**Affinity Purified Rabbit Polyclonal Antibody (Pab)**  
**Catalog # AP17165B**

**Specification**

---

**MYRIP Antibody (C-term) - Product Information**

Application	WB,E
Primary Accession	<a href="#">Q8NFW9</a>
Other Accession	<a href="#">NP_056275.2</a>
Reactivity	Human
Host	Rabbit
Clonality	Polyclonal
Isotype	Rabbit IgG
Calculated MW	95706
Antigen Region	659-686

**MYRIP Antibody (C-term) - Additional Information**

**Gene ID** 25924

**Other Names**

Rab effector MyRIP, Exophilin-8, Myosin-VIIa- and Rab-interacting protein, Synaptotagmin-like protein lacking C2 domains C, SlaC2-c, Slp homolog lacking C2 domains c, MYRIP, SLAC2C

**Target/Specificity**

This MYRIP antibody is generated from rabbits immunized with a KLH conjugated synthetic peptide between 659-686 amino acids from the C-terminal region of human MYRIP.

**Dilution**

WB~~1:1000

E~~Use at an assay dependent concentration.

**Format**

Purified polyclonal antibody supplied in PBS with 0.09% (W/V) sodium azide. This antibody is purified through a protein A column, followed by peptide affinity purification.

**Storage**

Maintain refrigerated at 2-8°C for up to 2 weeks. For long term storage store at -20°C in small aliquots to prevent freeze-thaw cycles.

**Precautions**

MYRIP Antibody (C-term) is for research use only and not for use in diagnostic or therapeutic procedures.

**MYRIP Antibody (C-term) - Protein Information**

**Name** MYRIP

## Synonyms SLAC2C

**Function** Rab effector protein involved in melanosome transport. Serves as link between melanosome-bound RAB27A and the motor proteins MYO5A and MYO7A. May link RAB27A-containing vesicles to actin filaments. Functions as a protein kinase A-anchoring protein (AKAP). May act as a scaffolding protein that links PKA to components of the exocytosis machinery, thus facilitating exocytosis, including insulin release (By similarity).

## Cellular Location

Cytoplasm {ECO:0000250|UniProtKB:Q8K3I4}. Cytoplasm, perinuclear region {ECO:0000250|UniProtKB:Q7TNY7} Cytoplasmic vesicle, secretory vesicle {ECO:0000250|UniProtKB:Q7TNY7} Note=In presynaptic and postsynaptic areas in photoreceptor cells and in the basal microvilli of retinal pigment epithelium cells. Associated with melanosomes. Colocalizes with actin filaments {ECO:0000250|UniProtKB:Q7TNY7}

## Tissue Location

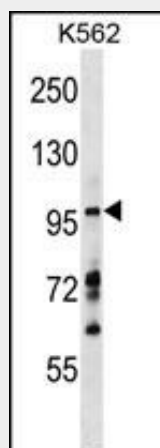
Detected in brain, skin, heart, adrenal medulla, pancreas, intestine, liver, kidney, muscle and testis

## MYRIP Antibody (C-term) - Protocols

Provided below are standard protocols that you may find useful for product applications.

- [Western Blot](#)
- [Blocking Peptides](#)
- [Dot Blot](#)
- [Immunohistochemistry](#)
- [Immunofluorescence](#)
- [Immunoprecipitation](#)
- [Flow Cytometry](#)
- [Cell Culture](#)

## MYRIP Antibody (C-term) - Images



MYRIP Antibody (C-term) (Cat. #AP17165b) western blot analysis in K562 cell line lysates (35ug/lane). This demonstrates the MYRIP antibody detected the MYRIP protein (arrow).

## MYRIP Antibody (C-term) - Background

Rab effector protein involved in melanosome transport. Serves as link between melanosome-bound RAB27A and the motor proteins MYO5A and MYO7A. May link RAB27A-containing vesicles to actin

filaments (By similarity).

#### **MYRIP Antibody (C-term) - References**

Rose, J. Phd, et al. Mol. Med. (2010) In press :  
Nightingale, T.D., et al. Blood 113(20):5010-5018(2009)  
Hayasaka, S., et al. Asian J. Androl. 10(4):561-568(2008)  
Goehring, A.S., et al. J. Biol. Chem. 282(45):33155-33167(2007)  
Wu, C., et al. Proteomics 7(11):1775-1785(2007)