

PHF16 Antibody (C-term)
Affinity Purified Rabbit Polyclonal Antibody (Pab)
Catalog # AP17166b

Specification

PHF16 Antibody (C-term) - Product Information

Application	IHC-P, WB,E
Primary Accession	O92613
Other Accession	NP_001070913.1 , NP_055550.1
Reactivity	Human
Host	Rabbit
Clonality	Polyclonal
Isotype	Rabbit IgG
Calculated MW	93808
Antigen Region	779-806

PHF16 Antibody (C-term) - Additional Information

Gene ID 9767

Other Names

Protein Jade-3, Jade family PHD finger protein 3, PHD finger protein 16, JADE3, KIAA0215, PHF16

Target/Specificity

This PHF16 antibody is generated from rabbits immunized with a KLH conjugated synthetic peptide between 779-806 amino acids from the C-terminal region of human PHF16.

Dilution

IHC-P~~1:10~50

WB~~1:1000

E~~Use at an assay dependent concentration.

Format

Purified polyclonal antibody supplied in PBS with 0.09% (W/V) sodium azide. This antibody is purified through a protein A column, followed by peptide affinity purification.

Storage

Maintain refrigerated at 2-8°C for up to 2 weeks. For long term storage store at -20°C in small aliquots to prevent freeze-thaw cycles.

Precautions

PHF16 Antibody (C-term) is for research use only and not for use in diagnostic or therapeutic procedures.

PHF16 Antibody (C-term) - Protein Information

Name JADE3

Synonyms KIAA0215, PHF16

Function Scaffold subunit of some HBO1 complexes, which have a histone H4 acetyltransferase activity.

Tissue Location

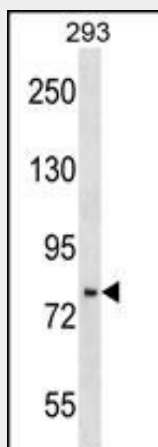
Ubiquitously expressed, with highest levels in placenta and uterus.

PHF16 Antibody (C-term) - Protocols

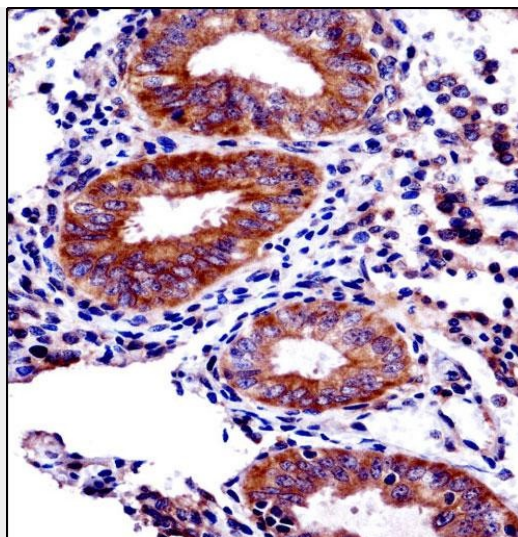
Provided below are standard protocols that you may find useful for product applications.

- [Western Blot](#)
- [Blocking Peptides](#)
- [Dot Blot](#)
- [Immunohistochemistry](#)
- [Immunofluorescence](#)
- [Immunoprecipitation](#)
- [Flow Cytometry](#)
- [Cell Culture](#)

PHF16 Antibody (C-term) - Images



PHF16 Antibody (C-term) (Cat. #AP17166b) western blot analysis in 293 cell line lysates (35ug/lane). This demonstrates the PHF16 antibody detected the PHF16 protein (arrow).



PHF16 Antibody (C-term) (AP17166b) immunohistochemistry analysis in formalin fixed and paraffin embedded human uterus tissue followed by peroxidase conjugation of the secondary antibody and DAB staining. This data demonstrates the use of PHF16 Antibody (C-term) for immunohistochemistry. Clinical relevance has not been evaluated.

PHF16 Antibody (C-term) - Background

This gene is part of a gene cluster on chromosome Xp11.23. The encoded protein contains a zinc finger motif often found in transcriptional regulators, however, its exact function is not known. Alternative splicing results in multiple transcript variants encoding the same protein.

PHF16 Antibody (C-term) - References

Olsen, J.V., et al. Cell 127(3):635-648(2006)
Olsen, J.V., et al. Cell 127(3):635-648(2006)
Doyon, Y., et al. Mol. Cell 21(1):51-64(2006)
Ross, M.T., et al. Nature 434(7031):325-337(2005)
Beausoleil, S.A., et al. Proc. Natl. Acad. Sci. U.S.A. 101(33):12130-12135(2004)