

**BCL7B Antibody (C-term)**  
**Affinity Purified Rabbit Polyclonal Antibody (Pab)**  
**Catalog # AP17168b****Specification**

---

**BCL7B Antibody (C-term) - Product Information**

Application	IHC-P, WB,E
Primary Accession	<a href="#">O9BQE9</a>
Other Accession	<a href="#">O921K9</a> , <a href="#">Q3T0A6</a> , <a href="#">NP_001698.2</a>
Reactivity	Human, Mouse
Predicted	Bovine
Host	Rabbit
Clonality	Polyclonal
Isotype	Rabbit IgG
Calculated MW	22195
Antigen Region	137-164

**BCL7B Antibody (C-term) - Additional Information****Gene ID** 9275**Other Names**

B-cell CLL/lymphoma 7 protein family member B, Hom s 3, BCL7B

**Target/Specificity**

This BCL7B antibody is generated from rabbits immunized with a KLH conjugated synthetic peptide between 137-164 amino acids from the C-terminal region of human BCL7B.

**Dilution**

IHC-P~~1:10~50

WB~~1:1000

E~~Use at an assay dependent concentration.

**Format**

Purified polyclonal antibody supplied in PBS with 0.09% (W/V) sodium azide. This antibody is purified through a protein A column, followed by peptide affinity purification.

**Storage**

Maintain refrigerated at 2-8°C for up to 2 weeks. For long term storage store at -20°C in small aliquots to prevent freeze-thaw cycles.

**Precautions**

BCL7B Antibody (C-term) is for research use only and not for use in diagnostic or therapeutic procedures.

**BCL7B Antibody (C-term) - Protein Information****Name** BCL7B

**Function** Positive regulator of apoptosis. Plays a role in the Wnt signaling pathway, negatively regulating the expression of Wnt signaling components CTNNB1 and HMGA1 (PubMed:[25569233](#)). Involved in cell cycle progression, maintenance of the nuclear structure and stem cell differentiation (PubMed:[25569233](#)). May play a role in lung tumor development or progression (By similarity).

**Tissue Location**

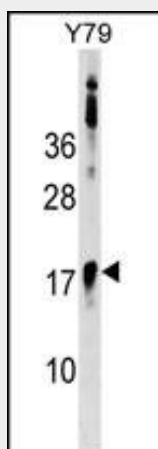
Ubiquitous.

**BCL7B Antibody (C-term) - Protocols**

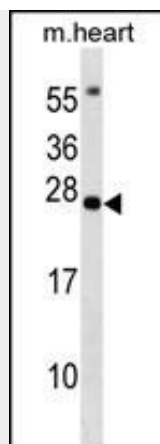
Provided below are standard protocols that you may find useful for product applications.

- [Western Blot](#)
- [Blocking Peptides](#)
- [Dot Blot](#)
- [Immunohistochemistry](#)
- [Immunofluorescence](#)
- [Immunoprecipitation](#)
- [Flow Cytometry](#)
- [Cell Culture](#)

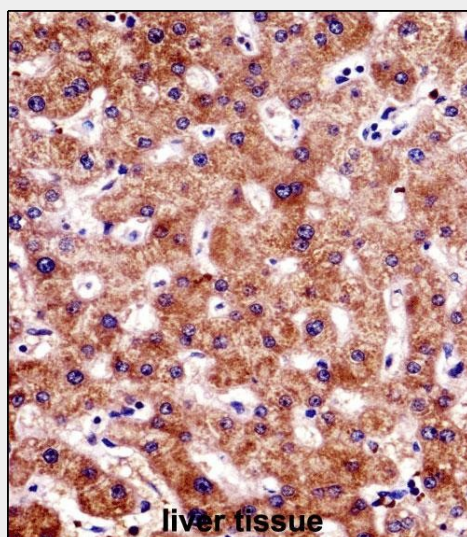
**BCL7B Antibody (C-term) - Images**



BCL7B Antibody (C-term) (Cat. #AP17168b) western blot analysis in Y79 cell line lysates (35ug/lane). This demonstrates the BCL7B antibody detected the BCL7B protein (arrow).



BCL7B Antibody (C-term) (Cat. #AP17168b) western blot analysis in mouse heart tissue lysates (35ug/lane). This demonstrates the BCL7B antibody detected the BCL7B protein (arrow).



BCL7B Antibody (C-term) (AP17168b) immunohistochemistry analysis in formalin fixed and paraffin embedded human liver tissue followed by peroxidase conjugation of the secondary antibody and DAB staining. This data demonstrates the use of BCL7B Antibody (C-term) for immunohistochemistry. Clinical relevance has not been evaluated.

### **BCL7B Antibody (C-term) - Background**

This gene encodes a member of the BCL7 family including BCL7A, BCL7B and BCL7C proteins. This member is BCL7B, which contains a region that is highly similar to the N-terminal segment of BCL7A or BCL7C proteins. The BCL7A protein is encoded by the gene known to be directly involved in a three-way gene translocation in a Burkitt lymphoma cell line. This gene is located at a chromosomal region commonly deleted in Williams syndrome. This gene is highly conserved from *C. elegans* to human. Multiple alternatively spliced transcript variants have been found for this gene.

### **BCL7B Antibody (C-term) - References**

Fontaine-Bisson, B., et al. *Diabetologia* 53(10):2155-2162(2010)  
Kathiresan, S., et al. *Nat. Genet.* 40(2):189-197(2008)

Willer, C.J., et al. Nat. Genet. 40(2):161-169(2008)  
Olsen, J.V., et al. Cell 127(3):635-648(2006)  
Jadayel, D.M., et al. Gene 224 (1-2), 35-44 (1998) :