

TRIM68 Antibody (C-term)
Affinity Purified Rabbit Polyclonal Antibody (Pab)
Catalog # AP17177b**Specification**

TRIM68 Antibody (C-term) - Product Information

Application	WB,E
Primary Accession	O6AZZ1
Other Accession	NP_060543.5
Reactivity	Human
Host	Rabbit
Clonality	Polyclonal
Isotype	Rabbit IgG
Calculated MW	56259
Antigen Region	382-411

TRIM68 Antibody (C-term) - Additional Information**Gene ID** 55128**Other Names**

E3 ubiquitin-protein ligase TRIM68, 632-, RING finger protein 137, SSA protein SS-56, SS-56, Tripartite motif-containing protein 68, TRIM68, GC109, RNF137, SS56

Target/Specificity

This TRIM68 antibody is generated from rabbits immunized with a KLH conjugated synthetic peptide between 382-411 amino acids from the C-terminal region of human TRIM68.

Dilution

WB~~1:1000

E~~Use at an assay dependent concentration.

Format

Purified polyclonal antibody supplied in PBS with 0.09% (W/V) sodium azide. This antibody is purified through a protein A column, followed by peptide affinity purification.

Storage

Maintain refrigerated at 2-8°C for up to 2 weeks. For long term storage store at -20°C in small aliquots to prevent freeze-thaw cycles.

Precautions

TRIM68 Antibody (C-term) is for research use only and not for use in diagnostic or therapeutic procedures.

TRIM68 Antibody (C-term) - Protein Information**Name** TRIM68

Synonyms GC109, RNF137, SS56

Function Functions as a ubiquitin E3 ligase. Acts as a coactivator of androgen receptor (AR) depending on its ubiquitin ligase activity.

Cellular Location

Cytoplasm, perinuclear region. Nucleus. Note=Colocalized with AR in nucleus

Tissue Location

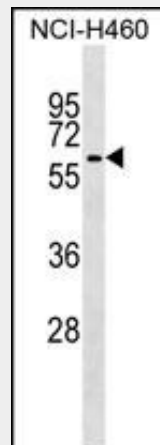
Widely expressed. Expressed at high levels in prostate cancer cell lines. Up-regulation could be restricted to androgen-dependent cells.

TRIM68 Antibody (C-term) - Protocols

Provided below are standard protocols that you may find useful for product applications.

- [Western Blot](#)
- [Blocking Peptides](#)
- [Dot Blot](#)
- [Immunohistochemistry](#)
- [Immunofluorescence](#)
- [Immunoprecipitation](#)
- [Flow Cytometry](#)
- [Cell Culture](#)

TRIM68 Antibody (C-term) - Images



TRIM68 Antibody (C-term) (Cat. #AP17177b) western blot analysis in NCI-H460 cell line lysates (35ug/lane). This demonstrates the TRIM68 antibody detected the TRIM68 protein (arrow).

TRIM68 Antibody (C-term) - Background

The protein encoded by this gene contains a RING finger domain, a motif present in a variety of functionally distinct proteins and known to be involved in protein-protein and protein-DNA interactions. This gene is expressed in many cancer cell lines. Its expression in normal tissues, however, was found to be restricted to prostate. This gene was also found to be differentially expressed in androgen-dependent versus androgen-independent prostate cancer cells.

TRIM68 Antibody (C-term) - References

Malhotra, A., et al. Diabetes Metab. Res. Rev. 25(8):740-747(2009)
Miyajima, N., et al. Cancer Res. 68(9):3486-3494(2008)
Chang, G.T., et al. Eur. J. Cancer 37(16):2129-2134(2001)
Billaut-Mulot, O., et al. J. Clin. Invest. 108(6):861-869(2001)
Simpson, J.C., et al. EMBO Rep. 1(3):287-292(2000)

TRIM68 Antibody (C-term) - Citations

- [Lentivirus-mediated RNA interference of tripartite motif 68 inhibits the proliferation of colorectal cancer cell lines SW1116 and HCT116 in vitro.](#)