

PDE4A Antibody (N-term)
Affinity Purified Rabbit Polyclonal Antibody (Pab)
Catalog # AP17181a

Specification

PDE4A Antibody (N-term) - Product Information

Application	WB,E
Primary Accession	P27815
Other Accession	NP_001104778.1 , NP_001104777.1
Reactivity	Human, Mouse
Host	Rabbit
Clonality	Polyclonal
Isotype	Rabbit IgG
Calculated MW	98143
Antigen Region	32-61

PDE4A Antibody (N-term) - Additional Information

Gene ID 5141

Other Names

cAMP-specific 3', 5'-cyclic phosphodiesterase 4A, DPDE2, PDE46, PDE4A, DPDE2

Target/Specificity

This PDE4A antibody is generated from rabbits immunized with a KLH conjugated synthetic peptide between 32-61 amino acids from the N-terminal region of human PDE4A.

Dilution

WB~~1:1000

Format

Purified polyclonal antibody supplied in PBS with 0.09% (W/V) sodium azide. This antibody is purified through a protein A column, followed by peptide affinity purification.

Storage

Maintain refrigerated at 2-8°C for up to 2 weeks. For long term storage store at -20°C in small aliquots to prevent freeze-thaw cycles.

Precautions

PDE4A Antibody (N-term) is for research use only and not for use in diagnostic or therapeutic procedures.

PDE4A Antibody (N-term) - Protein Information

Name PDE4A

Synonyms DPDE2

Function Hydrolyzes the second messenger 3',5'-cyclic AMP (cAMP), which is a key regulator of many important physiological processes.

Cellular Location

[Isoform 1]: Cytoplasm, perinuclear region [Isoform 3]: Cytoplasm, cytosol [Isoform 6]: Cytoplasm, perinuclear region

Tissue Location

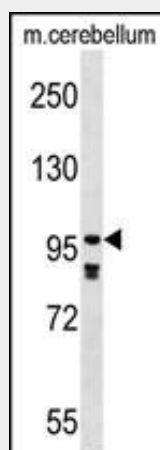
[Isoform 1]: Expressed in lymphoid cell subsets including CD8-positive T cells and T-helper 2 cells. Expressed in dendritic cells. [Isoform 6]: Expressed at high levels in the heart and small intestine. It is also found in the brain, kidney, spleen, colon, salivary gland, ovary and peripheral blood lymphocytes

PDE4A Antibody (N-term) - Protocols

Provided below are standard protocols that you may find useful for product applications.

- [Western Blot](#)
- [Blocking Peptides](#)
- [Dot Blot](#)
- [Immunohistochemistry](#)
- [Immunofluorescence](#)
- [Immunoprecipitation](#)
- [Flow Cytometry](#)
- [Cell Culture](#)

PDE4A Antibody (N-term) - Images



PDE4A Antibody (N-term) (Cat. #AP17181a) western blot analysis in mouse cerebellum tissue lysates (35ug/lane). This demonstrates the PDE4A antibody detected the PDE4A protein (arrow).

PDE4A Antibody (N-term) - Background

Cyclic nucleotides are important second messengers that regulate and mediate a number of cellular responses to extracellular signals, such as hormones, light, and neurotransmitters. Cyclic nucleotide phosphodiesterases (PDEs) regulate the cellular concentrations of cyclic nucleotides and thereby play a role in signal transduction. PDE4A is a class IV cAMP-specific PDE (summary by Milatovich et al., 1994 [PubMed])

8009369])).

PDE4A Antibody (N-term) - References

Bailey, S.D., et al. Diabetes Care 33(10):2250-2253(2010)
Selige, J., et al. J. Cell. Physiol. 223(2):317-326(2010)
Bjorgo, E., et al. Mol. Cell. Biol. 30(7):1660-1672(2010)
Singh, D., et al. Respir. Res. 11, 26 (2010) :
Talmud, P.J., et al. Am. J. Hum. Genet. 85(5):628-642(2009)