

**RTN1 Antibody (N-term)**  
**Affinity Purified Rabbit Polyclonal Antibody (Pab)**  
**Catalog # AP17182a****Specification**

---

**RTN1 Antibody (N-term) - Product Information**

Application	WB,E
Primary Accession	<a href="#">Q16799</a>
Other Accession	<a href="#">NP_996734.1</a> , <a href="#">NP_066959.1</a>
Reactivity	Human, Mouse
Host	Rabbit
Clonality	Polyclonal
Isotype	Rabbit IgG
Calculated MW	83618
Antigen Region	198-227

**RTN1 Antibody (N-term) - Additional Information****Gene ID** 6252**Other Names**

Reticulon-1, Neuroendocrine-specific protein, RTN1, NSP

**Target/Specificity**

This RTN1 antibody is generated from rabbits immunized with a KLH conjugated synthetic peptide between 198-227 amino acids from the N-terminal region of human RTN1.

**Dilution**

WB~~1:1000

E~~Use at an assay dependent concentration.

**Format**

Purified polyclonal antibody supplied in PBS with 0.09% (W/V) sodium azide. This antibody is purified through a protein A column, followed by peptide affinity purification.

**Storage**

Maintain refrigerated at 2-8°C for up to 2 weeks. For long term storage store at -20°C in small aliquots to prevent freeze-thaw cycles.

**Precautions**

RTN1 Antibody (N-term) is for research use only and not for use in diagnostic or therapeutic procedures.

**RTN1 Antibody (N-term) - Protein Information****Name** RTN1**Synonyms** NSP

**Function** Inhibits amyloid precursor protein processing, probably by blocking BACE1 activity.

**Cellular Location**

Endoplasmic reticulum membrane; Multi-pass membrane protein. Golgi apparatus membrane; Multi-pass membrane protein

**Tissue Location**

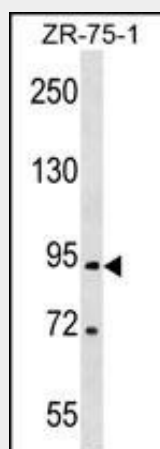
Expressed in neural and neuroendocrine tissues and cell cultures derived therefrom. Expression of isoform RTN1-C is strongly correlated with neuronal differentiation

**RTN1 Antibody (N-term) - Protocols**

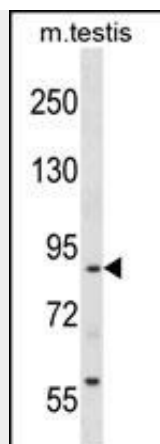
Provided below are standard protocols that you may find useful for product applications.

- [Western Blot](#)
- [Blocking Peptides](#)
- [Dot Blot](#)
- [Immunohistochemistry](#)
- [Immunofluorescence](#)
- [Immunoprecipitation](#)
- [Flow Cytometry](#)
- [Cell Culture](#)

**RTN1 Antibody (N-term) - Images**



RTN1 Antibody (N-term) (Cat. #AP17182a) western blot analysis in ZR-75-1 cell line lysates (35ug/lane). This demonstrates the RTN1 antibody detected the RTN1 protein (arrow).



RTN1 Antibody (N-term) (Cat. #AP17182a) western blot analysis in mouse testis tissue lysates (35ug/lane). This demonstrates the RTN1 antibody detected the RTN1 protein (arrow).

#### **RTN1 Antibody (N-term) - Background**

This gene belongs to the family of reticulon encoding genes. Reticulons are associated with the endoplasmic reticulum, and are involved in neuroendocrine secretion or in membrane trafficking in neuroendocrine cells. Alternatively spliced transcript variants encoding different isoforms have been identified. Multiple promoters rather than alternative splicing of internal exons seem to be involved in this diversity. [provided by RefSeq].

#### **RTN1 Antibody (N-term) - References**

Rose, J. Phd, et al. Mol. Med. (2010) In press :  
Fazi, B., et al. Oncogene 28(43):3814-3824(2009)  
Melino, S., et al. Biochemistry 48(2):242-253(2009)  
Di Sano, F., et al. J. Neurochem. 102(2):345-353(2007)  
Iwahashi, J., et al. Biochem. Biophys. Res. Commun. 355(2):508-512(2007)