

MKRN2 Antibody (N-term)
Affinity Purified Rabbit Polyclonal Antibody (Pab)
Catalog # AP17190a**Specification**

MKRN2 Antibody (N-term) - Product Information

Application	WB,E
Primary Accession	Q9H000
Other Accession	NP_054879.3
Reactivity	Human
Host	Rabbit
Clonality	Polyclonal
Isotype	Rabbit IgG
Calculated MW	46940
Antigen Region	78-106

MKRN2 Antibody (N-term) - Additional Information**Gene ID** 23609**Other Names**

Probable E3 ubiquitin-protein ligase makorin-2, 632-, RING finger protein 62, MKRN2, RNF62

Target/Specificity

This MKRN2 antibody is generated from rabbits immunized with a KLH conjugated synthetic peptide between 78-106 amino acids from the N-terminal region of human MKRN2.

Dilution

WB~~1:1000

E~~Use at an assay dependent concentration.

Format

Purified polyclonal antibody supplied in PBS with 0.09% (W/V) sodium azide. This antibody is purified through a protein A column, followed by peptide affinity purification.

Storage

Maintain refrigerated at 2-8°C for up to 2 weeks. For long term storage store at -20°C in small aliquots to prevent freeze-thaw cycles.

Precautions

MKRN2 Antibody (N-term) is for research use only and not for use in diagnostic or therapeutic procedures.

MKRN2 Antibody (N-term) - Protein Information**Name** MKRN2**Synonyms** RNF62

Function E3 ubiquitin ligase catalyzing the covalent attachment of ubiquitin moieties onto substrate proteins (By similarity). Promotes the polyubiquitination and proteasome-dependent degradation of RELA/p65, thereby suppressing RELA-mediated NF-kappaB transactivation and negatively regulating inflammatory responses (By similarity). Plays a role in the regulation of spermiation and in male fertility (By similarity).

Cellular Location

Cytoplasm {ECO:0000250|UniProtKB:Q9ERV1}. Nucleus {ECO:0000250|UniProtKB:Q9ERV1}

Tissue Location

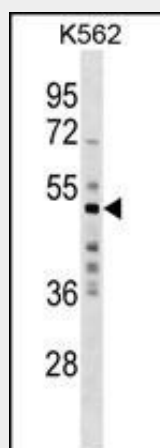
Expressed in sperm, with significantly reduced expression in sperm of patients with oligoasthenoteratozoospermia (at protein level) (PubMed:28008940). Widely expressed with expression in testis, ovary, small intestine, colon, peripheral blood leukocytes, fetal liver, bone marrow, thymus, lymph node and spleen (PubMed:11597136).

MKRN2 Antibody (N-term) - Protocols

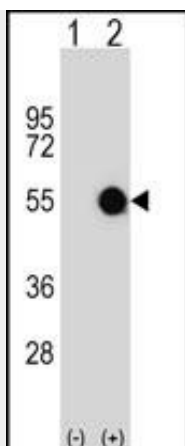
Provided below are standard protocols that you may find useful for product applications.

- [Western Blot](#)
- [Blocking Peptides](#)
- [Dot Blot](#)
- [Immunohistochemistry](#)
- [Immunofluorescence](#)
- [Immunoprecipitation](#)
- [Flow Cytometry](#)
- [Cell Culture](#)

MKRN2 Antibody (N-term) - Images



MKRN2 Antibody (N-term) (Cat. #AP17190a) western blot analysis in K562 cell line lysates (35ug/lane). This demonstrates the MKRN2 antibody detected the MKRN2 protein (arrow).



Western blot analysis of MKRN2 (arrow) using rabbit polyclonal MKRN2 Antibody (N-term) (Cat. #AP17190a). 293 cell lysates (2 ug/lane) either nontransfected (Lane 1) or transiently transfected (Lane 2) with the MKRN2 gene.

MKRN2 Antibody (N-term) - Background

Members of the makorin family, including MKRN2, have a characteristic zinc finger composition that suggests that they are ribonucleoproteins (Gray et al., 2001 [PubMed 11597136]).[supplied by OMIM].

MKRN2 Antibody (N-term) - References

Gray, T.A., et al. Genomics 77(3):119-126(2001)