

RBMS1 Antibody (Center)
Affinity Purified Rabbit Polyclonal Antibody (Pab)
Catalog # AP17208c**Specification**

RBMS1 Antibody (Center) - Product Information

Application	WB,E
Primary Accession	P29558
Other Accession	NP_002888.1 , NP_058520.1
Reactivity	Human
Host	Rabbit
Clonality	Polyclonal
Isotype	Rabbit IgG
Calculated MW	44505
Antigen Region	224-252

RBMS1 Antibody (Center) - Additional Information**Gene ID** 5937**Other Names**

RNA-binding motif, single-stranded-interacting protein 1, Single-stranded DNA-binding protein MSSP-1, Suppressor of CDC2 with RNA-binding motif 2, RBMS1, C2orf12, MSSP, MSSP1, SCR2

Target/Specificity

This RBMS1 antibody is generated from rabbits immunized with a KLH conjugated synthetic peptide between 224-252 amino acids from the Central region of human RBMS1.

Dilution

WB~~1:1000

Format

Purified polyclonal antibody supplied in PBS with 0.09% (W/V) sodium azide. This antibody is purified through a protein A column, followed by peptide affinity purification.

Storage

Maintain refrigerated at 2-8°C for up to 2 weeks. For long term storage store at -20°C in small aliquots to prevent freeze-thaw cycles.

Precautions

RBMS1 Antibody (Center) is for research use only and not for use in diagnostic or therapeutic procedures.

RBMS1 Antibody (Center) - Protein Information**Name** RBMS1**Synonyms** C2orf12, MSSP, MSSP1, SCR2

Function Single-stranded DNA binding protein that interacts with the region upstream of the MYC gene. Binds specifically to the DNA sequence motif 5'-[AT]CT[AT][AT]T-3'. Probably has a role in DNA replication.

Cellular Location

Nucleus.

Tissue Location

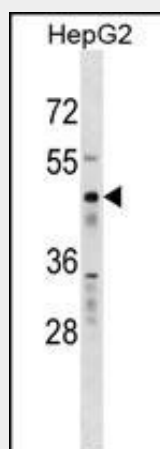
Highest amounts are found in placenta, lung and heart

RBMS1 Antibody (Center) - Protocols

Provided below are standard protocols that you may find useful for product applications.

- [Western Blot](#)
- [Blocking Peptides](#)
- [Dot Blot](#)
- [Immunohistochemistry](#)
- [Immunofluorescence](#)
- [Immunoprecipitation](#)
- [Flow Cytometry](#)
- [Cell Culture](#)

RBMS1 Antibody (Center) - Images



RBMS1 Antibody (Center) (Cat. #AP17208c) western blot analysis in HepG2 cell line lysates (35ug/lane). This demonstrates the RBMS1 antibody detected the RBMS1 protein (arrow).

RBMS1 Antibody (Center) - Background

This gene encodes a member of a small family of proteins which bind single stranded DNA/RNA. These proteins are characterized by the presence of two sets of ribonucleoprotein consensus sequence (RNP-CS) that contain conserved motifs, RNP1 and RNP2, originally described in RNA binding proteins, and required for DNA binding. These proteins have been implicated in such diverse functions as DNA replication, gene transcription, cell cycle progression and apoptosis. Several transcript variants, resulting from alternative splicing and encoding different isoforms, have been described. A pseudogene for this locus is found

on chromosome 12.

RBMS1 Antibody (Center) - References

Qi, L., et al. Hum. Mol. Genet. 19(13):2706-2715(2010)
Rose, J.E., et al. Mol. Med. 16 (7-8), 247-253 (2010) :
Landers, J.E., et al. Proc. Natl. Acad. Sci. U.S.A. 106(22):9004-9009(2009)
Sugiyama, N., et al. Mol. Cell Proteomics 6(6):1103-1109(2007)
Lamesch, P., et al. Genomics 89(3):307-315(2007)