

**RHD Antibody (Center)**  
**Affinity Purified Rabbit Polyclonal Antibody (Pab)**  
**Catalog # AP17214c****Specification**

---

**RHD Antibody (Center) - Product Information**

Application	WB,E
Primary Accession	<a href="#">Q02161</a>
Other Accession	<a href="#">NP_001121163.1</a> , <a href="#">NP_057208.2</a>
Reactivity	Human
Host	Rabbit
Clonality	Polyclonal
Isotype	Rabbit IgG
Calculated MW	45211
Antigen Region	173-201

**RHD Antibody (Center) - Additional Information****Gene ID** 6007**Other Names**

Blood group Rh(D) polypeptide, RHXIII, Rh polypeptide 2, RhPII, Rhesus D antigen, CD240D, RHD

**Target/Specificity**

This RHD antibody is generated from rabbits immunized with a KLH conjugated synthetic peptide between 173-201 amino acids from the Central region of human RHD.

**Dilution**

WB~~1:1000

E~~Use at an assay dependent concentration.

**Format**

Purified polyclonal antibody supplied in PBS with 0.09% (W/V) sodium azide. This antibody is purified through a protein A column, followed by peptide affinity purification.

**Storage**

Maintain refrigerated at 2-8°C for up to 2 weeks. For long term storage store at -20°C in small aliquots to prevent freeze-thaw cycles.

**Precautions**

RHD Antibody (Center) is for research use only and not for use in diagnostic or therapeutic procedures.

**RHD Antibody (Center) - Protein Information****Name** RHD**Function** May be part of an oligomeric complex which is likely to have a transport or channel

function in the erythrocyte membrane.

**Cellular Location**

Cell membrane; Multi-pass membrane protein

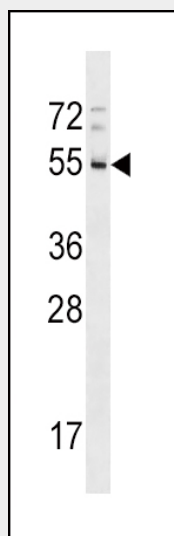
**Tissue Location**

Restricted to tissues or cell lines expressing erythroid characters

**RHD Antibody (Center) - Protocols**

Provided below are standard protocols that you may find useful for product applications.

- [Western Blot](#)
- [Blocking Peptides](#)
- [Dot Blot](#)
- [Immunohistochemistry](#)
- [Immunofluorescence](#)
- [Immunoprecipitation](#)
- [Flow Cytometry](#)
- [Cell Culture](#)

**RHD Antibody (Center) - Images**

RHD Antibody (Center) (Cat. #AP17214c) western blot analysis in A549 cell line lysates (35ug/lane). This demonstrates the RHD antibody detected the RHD protein (arrow).

**RHD Antibody (Center) - Background**

The Rh blood group system is the second most clinically significant of the blood groups, second only to ABO. It is also the most polymorphic of the blood groups, with variations due to deletions, gene conversions, and missense mutations. The Rh blood group includes this gene, which encodes the RhD protein, and a second gene that encodes both the RhC and RhE antigens on a single polypeptide. The two genes, and a third unrelated gene, are found in a cluster on chromosome 1. The classification of Rh-positive and Rh-negative individuals is determined by the presence or absence of

the highly immunogenic RhD protein on the surface of erythrocytes. Multiple transcript variants encoding different isoforms have been found for this gene.

#### **RHD Antibody (Center) - References**

Flegr, J., et al. Folia Parasitol. 57(2):143-150(2010)  
Liu, H.C., et al. Biochim. Biophys. Acta 1800(6):565-573(2010)  
Schmid, P., et al. Transfusion 50(1):267-269(2010)  
Wang, X.D., et al. Eur. J. Clin. Invest. 39(7):607-617(2009)  
Wagner, F.F., et al. Blood 99(6):2272-2273(2002)