

SGCA Antibody (Center)
Affinity Purified Rabbit Polyclonal Antibody (Pab)
Catalog # AP17217c**Specification**

SGCA Antibody (Center) - Product Information

Application	WB,E
Primary Accession	Q16586
Other Accession	NP_001129169.1 , NP_000014.1
Reactivity	Human
Host	Rabbit
Clonality	Polyclonal
Isotype	Rabbit IgG
Calculated MW	42875
Antigen Region	239-266

SGCA Antibody (Center) - Additional Information**Gene ID** 6442**Other Names**

Alpha-sarcoglycan, Alpha-SG, 50 kDa dystrophin-associated glycoprotein, 50DAG, Adhalin, Dystroglycan-2, SGCA, ADL, DAG2

Target/Specificity

This SGCA antibody is generated from rabbits immunized with a KLH conjugated synthetic peptide between 239-266 amino acids from the Central region of human SGCA.

Dilution

WB~~1:1000

E~~Use at an assay dependent concentration.

Format

Purified polyclonal antibody supplied in PBS with 0.09% (W/V) sodium azide. This antibody is purified through a protein A column, followed by peptide affinity purification.

Storage

Maintain refrigerated at 2-8°C for up to 2 weeks. For long term storage store at -20°C in small aliquots to prevent freeze-thaw cycles.

Precautions

SGCA Antibody (Center) is for research use only and not for use in diagnostic or therapeutic procedures.

SGCA Antibody (Center) - Protein Information**Name** SGCA

Synonyms ADL, DAG2

Function Component of the sarcoglycan complex, a subcomplex of the dystrophin-glycoprotein complex which forms a link between the F-actin cytoskeleton and the extracellular matrix.

Cellular Location

Cell membrane, sarcolemma; Single-pass type I membrane protein. Cytoplasm, cytoskeleton

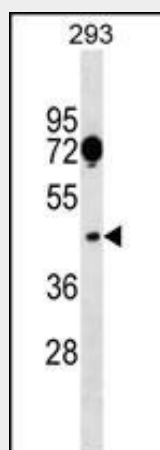
Tissue Location

Most strongly expressed in skeletal muscle. Also expressed in cardiac muscle and, at much lower levels, in lung. In the fetus, most abundant in cardiac muscle and, at lower levels, in lung Also detected in liver and kidney. Not expressed in brain

SGCA Antibody (Center) - Protocols

Provided below are standard protocols that you may find useful for product applications.

- [Western Blot](#)
- [Blocking Peptides](#)
- [Dot Blot](#)
- [Immunohistochemistry](#)
- [Immunofluorescence](#)
- [Immunoprecipitation](#)
- [Flow Cytometry](#)
- [Cell Culture](#)

SGCA Antibody (Center) - Images

SGCA Antibody (Center) (Cat. #AP17217c) western blot analysis in 293 cell line lysates (35ug/lane). This demonstrates the SGCA antibody detected the SGCA protein (arrow).

SGCA Antibody (Center) - Background

This gene encodes a component of the dystrophin-glycoprotein complex (DGC), which is critical to the stability of muscle fiber membranes and to the linking of the actin cytoskeleton to the extracellular matrix. Its expression is thought to be restricted to striated muscle. Mutations in this gene result in type 2D autosomal recessive limb-girdle muscular dystrophy. Multiple transcript variants encoding different isoforms have been

found for this gene.

SGCA Antibody (Center) - References

Mendell, J.R., et al. Ann. Neurol. 68(5):629-638(2010)
Fernandez, K., et al. Am. J. Pathol. 176(1):416-434(2010)
Klinge, L., et al. Neuromuscul. Disord. 18(12):934-941(2008)
Delgado-Olguin, P., et al. Biochim. Biophys. Acta 1779(1):74-80(2008)
Rafii, M.S., et al. J. Cell. Physiol. 209(2):439-447(2006)