

**UBE2Z Antibody (C-term)**  
**Affinity Purified Rabbit Polyclonal Antibody (Pab)**  
**Catalog # AP17226b****Specification**

---

**UBE2Z Antibody (C-term) - Product Information**

Application	WB,E
Primary Accession	<a href="#">Q9H832</a>
Other Accession	<a href="#">Q6PCF7</a> , <a href="#">Q3B7D1</a> , <a href="#">Q3UE37</a> , <a href="#">NP_075567.2</a>
Reactivity	Human
Predicted	Mouse, Rat, Xenopus
Host	Rabbit
Clonality	Polyclonal
Isotype	Rabbit IgG
Calculated MW	38210
Antigen Region	284-310

**UBE2Z Antibody (C-term) - Additional Information****Gene ID** 65264**Other Names**

Ubiquitin-conjugating enzyme E2 Z, Uba6-specific E2 conjugating enzyme 1, Use1, Ubiquitin carrier protein Z, Ubiquitin-protein ligase Z, UBE2Z

**Target/Specificity**

This UBE2Z antibody is generated from rabbits immunized with a KLH conjugated synthetic peptide between 284-310 amino acids from the C-terminal region of human UBE2Z.

**Dilution**

WB~~1:1000

E~~Use at an assay dependent concentration.

**Format**

Purified polyclonal antibody supplied in PBS with 0.09% (W/V) sodium azide. This antibody is purified through a protein A column, followed by peptide affinity purification.

**Storage**

Maintain refrigerated at 2-8°C for up to 2 weeks. For long term storage store at -20°C in small aliquots to prevent freeze-thaw cycles.

**Precautions**

UBE2Z Antibody (C-term) is for research use only and not for use in diagnostic or therapeutic procedures.

**UBE2Z Antibody (C-term) - Protein Information****Name** UBE2Z

**Function** Catalyzes the covalent attachment of ubiquitin to other proteins (By similarity). Specific substrate for UBA6, not charged with ubiquitin by UBE1. May be involved in apoptosis regulation.

**Cellular Location**

Cytoplasm. Nucleus

**Tissue Location**

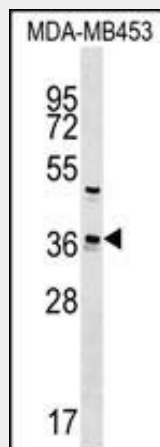
Widely expressed. Highly in placenta, pancreas, spleen and testis.

**UBE2Z Antibody (C-term) - Protocols**

Provided below are standard protocols that you may find useful for product applications.

- [Western Blot](#)
- [Blocking Peptides](#)
- [Dot Blot](#)
- [Immunohistochemistry](#)
- [Immunofluorescence](#)
- [Immunoprecipitation](#)
- [Flow Cytometry](#)
- [Cell Culture](#)

**UBE2Z Antibody (C-term) - Images**



UBE2Z Antibody (C-term) (Cat. #AP17226b) western blot analysis in MDA-MB453 cell line lysates (35ug/lane). This demonstrates the UBE2Z antibody detected the UBE2Z protein (arrow).

**UBE2Z Antibody (C-term) - Background**

Modification of proteins with ubiquitin (UBB; MIM 191339) or ubiquitin-like proteins controls many signaling networks and requires a ubiquitin activating enzyme (E1), a ubiquitin conjugating enzyme (E2), and a ubiquitin protein ligase (E3). UBE2Z is an E2 enzyme (Jin et al., 2007 [PubMed 17597759]). [supplied by OMIM].

**UBE2Z Antibody (C-term) - References**

Gu, X., et al. Mol. Biol. Rep. 34(3):183-188(2007)  
Jin, J., et al. Nature 447(7148):1135-1138(2007)