

KIF3B Antibody (N-term)
Affinity Purified Rabbit Polyclonal Antibody (Pab)
Catalog # AP17242a**Specification**

KIF3B Antibody (N-term) - Product Information

Application	WB,E
Primary Accession	O15066
Other Accession	NP_004789.1
Reactivity	Human
Host	Rabbit
Clonality	Polyclonal
Isotype	Rabbit IgG
Calculated MW	85125
Antigen Region	92-120

KIF3B Antibody (N-term) - Additional Information**Gene ID** 9371**Other Names**

Kinesin-like protein KIF3B, HH0048, Microtubule plus end-directed kinesin motor 3B, Kinesin-like protein KIF3B, N-terminally processed, KIF3B, KIAA0359

Target/Specificity

This KIF3B antibody is generated from rabbits immunized with a KLH conjugated synthetic peptide between 92-120 amino acids from the N-terminal region of human KIF3B.

Dilution

WB~~1:1000

E~~Use at an assay dependent concentration.

Format

Purified polyclonal antibody supplied in PBS with 0.09% (W/V) sodium azide. This antibody is purified through a protein A column, followed by peptide affinity purification.

Storage

Maintain refrigerated at 2-8°C for up to 2 weeks. For long term storage store at -20°C in small aliquots to prevent freeze-thaw cycles.

Precautions

KIF3B Antibody (N-term) is for research use only and not for use in diagnostic or therapeutic procedures.

KIF3B Antibody (N-term) - Protein Information**Name** KIF3B

Synonyms KIAA0359

Function Microtubule-based molecular motor that transport intracellular cargos, such as vesicles, organelles and protein complexes. Uses ATP hydrolysis to generate force to bind and move along the microtubule (By similarity). Plays a role in cilia formation (PubMed:[32386558](#)). Involved in photoreceptor integrity and opsin trafficking in rod photoreceptors (PubMed:[32386558](#)). Transports vesicles containing N-methyl-D-aspartate (NMDA) receptor subunit GRIN2A into neuronal dendrites (By similarity).

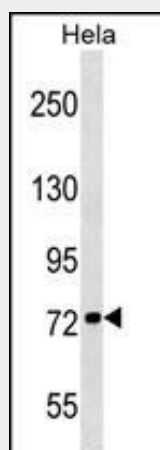
Cellular Location

Cytoplasm, cytoskeleton. Cell projection, cilium {ECO:0000250|UniProtKB:Q61771}. Cell projection, dendritic spine {ECO:0000250|UniProtKB:Q61771}

KIF3B Antibody (N-term) - Protocols

Provided below are standard protocols that you may find useful for product applications.

- [Western Blot](#)
- [Blocking Peptides](#)
- [Dot Blot](#)
- [Immunohistochemistry](#)
- [Immunofluorescence](#)
- [Immunoprecipitation](#)
- [Flow Cytometry](#)
- [Cell Culture](#)

KIF3B Antibody (N-term) - Images

KIF3B Antibody (N-term) (Cat. #AP17242a) western blot analysis in HeLa cell line lysates (35ug/lane). This demonstrates the KIF3B antibody detected the KIF3B protein (arrow).

KIF3B Antibody (N-term) - Background

The protein encoded by this gene acts as a heterodimer with kinesin family member 3A to aid in chromosome movement during mitosis and meiosis. The encoded protein is a plus end-directed microtubule motor and can interact with the SMC3 subunit of the cohesin complex. In addition, the encoded protein may be involved in the intracellular movement of membranous organelles. This protein and kinesin family member 3A form the kinesin II subfamily

of the kinesin superfamily.

KIF3B Antibody (N-term) - References

Reed, A.A., et al. Am. J. Physiol. Renal Physiol. 298 (2), F365-F380 (2010) :
Keil, R., et al. J. Cell. Sci. 122 (PT 8), 1174-1183 (2009) :
Schonteich, E., et al. J. Cell. Sci. 121 (PT 22), 3824-3833 (2008) :
Wu, Y., et al. Hum. Mol. Genet. 15(22):3280-3292(2006)
Haraguchi, K., et al. J. Biol. Chem. 281(7):4094-4099(2006)