

**TBC1D1 Antibody (Center)**  
**Affinity Purified Rabbit Polyclonal Antibody (Pab)**  
**Catalog # AP17252c****Specification**

---

**TBC1D1 Antibody (Center) - Product Information**

Application	WB,E
Primary Accession	<a href="#">Q86TI0</a>
Other Accession	<a href="#">NP_055988.2</a>
Reactivity	Human
Host	Rabbit
Clonality	Polyclonal
Isotype	Rabbit IgG
Calculated MW	133084
Antigen Region	617-645

**TBC1D1 Antibody (Center) - Additional Information****Gene ID** 23216**Other Names**

TBC1 domain family member 1, TBC1D1, KIAA1108

**Target/Specificity**

This TBC1D1 antibody is generated from rabbits immunized with a KLH conjugated synthetic peptide between 617-645 amino acids from the Central region of human TBC1D1.

**Dilution**

WB~~1:1000

E~~Use at an assay dependent concentration.

**Format**

Purified polyclonal antibody supplied in PBS with 0.09% (W/V) sodium azide. This antibody is purified through a protein A column, followed by peptide affinity purification.

**Storage**

Maintain refrigerated at 2-8°C for up to 2 weeks. For long term storage store at -20°C in small aliquots to prevent freeze-thaw cycles.

**Precautions**

TBC1D1 Antibody (Center) is for research use only and not for use in diagnostic or therapeutic procedures.

**TBC1D1 Antibody (Center) - Protein Information****Name** TBC1D1**Synonyms** KIAA1108

**Function** May act as a GTPase-activating protein for Rab family protein(s). May play a role in the cell cycle and differentiation of various tissues. Involved in the trafficking and translocation of GLUT4-containing vesicles and insulin-stimulated glucose uptake into cells (By similarity).

**Cellular Location**

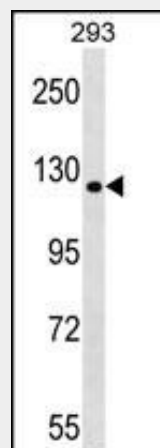
Nucleus.

**TBC1D1 Antibody (Center) - Protocols**

Provided below are standard protocols that you may find useful for product applications.

- [Western Blot](#)
- [Blocking Peptides](#)
- [Dot Blot](#)
- [Immunohistochemistry](#)
- [Immunofluorescence](#)
- [Immunoprecipitation](#)
- [Flow Cytometry](#)
- [Cell Culture](#)

**TBC1D1 Antibody (Center) - Images**



TBC1D1 Antibody (Center) (Cat. #AP17252c) western blot analysis in 293 cell line lysates (35ug/lane). This demonstrates the TBC1D1 antibody detected the TBC1D1 protein (arrow).

**TBC1D1 Antibody (Center) - Background**

TBC1D1 is the founding member of a family of proteins sharing a 180- to 200-amino acid TBC domain presumed to have a role in regulating cell growth and differentiation. These proteins share significant homology with TRE2 (USP6; MIM 604334), yeast Bub2, and CDC16 (MIM 603461) (White et al., 2000 [PubMed 10965142]). [supplied by OMIM].

**TBC1D1 Antibody (Center) - References**

Bailey, S.D., et al. Diabetes Care (2010) In press :  
Rose, J.E., et al. Mol. Med. 16 (7-8), 247-253 (2010) :  
Talmud, P.J., et al. Am. J. Hum. Genet. 85(5):628-642(2009)  
Ishibashi, K., et al. Genes Cells 14(1):41-52(2009)

Must, A., et al. Neuromolecular Med. 11(1):13-19(2009)