

**ESX1 Antibody (N-term)**  
**Affinity Purified Rabbit Polyclonal Antibody (Pab)**  
**Catalog # AP17259a**

**Specification**

---

**ESX1 Antibody (N-term) - Product Information**

Application	WB,E
Primary Accession	<a href="#">Q8N693</a>
Other Accession	<a href="#">NP_703149.1</a>
Reactivity	Human
Host	Rabbit
Clonality	Polyclonal
Isotype	Rabbit IgG
Calculated MW	44297
Antigen Region	28-55

**ESX1 Antibody (N-term) - Additional Information**

**Gene ID** 80712

**Other Names**

Homeobox protein ESX1, Extraembryonic, spermatogenesis, homeobox 1, Homeobox protein ESX1-N, Homeobox protein ESX1-C, ESX1, ESX1L, ESX1R

**Target/Specificity**

This ESX1 antibody is generated from rabbits immunized with a KLH conjugated synthetic peptide between 28-55 amino acids from the N-terminal region of human ESX1.

**Dilution**

WB~~1:1000-1:2000

E~~Use at an assay dependent concentration.

**Format**

Purified polyclonal antibody supplied in PBS with 0.09% (W/V) sodium azide. This antibody is purified through a protein A column, followed by peptide affinity purification.

**Storage**

Maintain refrigerated at 2-8°C for up to 2 weeks. For long term storage store at -20°C in small aliquots to prevent freeze-thaw cycles.

**Precautions**

ESX1 Antibody (N-term) is for research use only and not for use in diagnostic or therapeutic procedures.

**ESX1 Antibody (N-term) - Protein Information**

**Name** ESX1

**Synonyms** ESX1L, ESX1R

**Function** May coordinately regulate cell cycle progression and transcription during spermatogenesis. Inhibits degradation of polyubiquitinated cyclin A and cyclin B1 and thereby arrests the cell cycle at early M phase. ESXR1-N acts as a transcriptional repressor. Binds to the sequence 5'-TAATGTTATTA-3' which is present within the first intron of the KRAS gene and inhibits its expression. ESXR1-C has the ability to inhibit cyclin turnover.

**Cellular Location**

Cytoplasm. Nucleus {ECO:0000255|PROSITE-ProRule:PRU00108, ECO:0000269|PubMed:15235584} Note=ESXR1-N localizes specifically to the nucleus while ESXR1-C localizes specifically to the cytoplasm

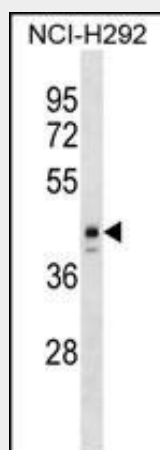
**Tissue Location**

Expressed in placenta and testis. Expressed in testicular germ cell tumors.

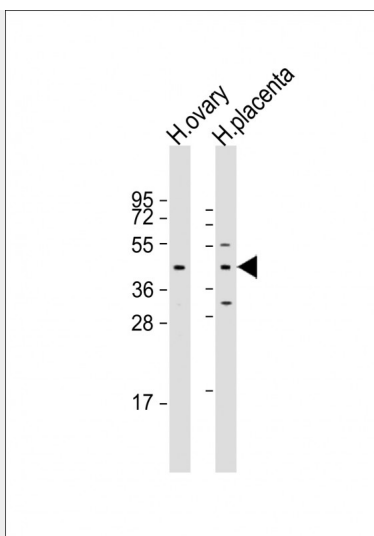
**ESX1 Antibody (N-term) - Protocols**

Provided below are standard protocols that you may find useful for product applications.

- [Western Blot](#)
- [Blocking Peptides](#)
- [Dot Blot](#)
- [Immunohistochemistry](#)
- [Immunofluorescence](#)
- [Immunoprecipitation](#)
- [Flow Cytometry](#)
- [Cell Culture](#)

**ESX1 Antibody (N-term) - Images**

ESX1 Antibody (N-term) (Cat. #AP17259a) western blot analysis in NCI-H292 cell line lysates (35ug/lane). This demonstrates the ESX1 antibody detected the ESX1 protein (arrow).



All lanes : Anti-ESX1 Antibody (N-term) at 1:1000-1:2000 dilution Lane 1: human ovary lysate  
Lane 2: human placenta lysate Lysates/proteins at 20 µg per lane. Secondary Goat Anti-Rabbit IgG, (H+L), Peroxidase conjugated at 1/10000 dilution. Predicted band size : 44 kDa  
Blocking/Dilution buffer: 5% NFDM/TBST.

#### ESX1 Antibody (N-term) - Background

This gene encodes a dual-function 65 kDa protein that undergoes proteolytic cleavage to produce a 45 kDa N-terminal fragment with a paired-like homeodomain and a 20 kDa C-terminal fragment with a proline-rich domain. The C-terminal fragment localizes to the cytoplasm while the N-terminal fragment localizes exclusively to the nucleus. In contrast to human, the mouse homolog has a novel PN/PF motif in the C-terminus and is paternally imprinted in placental tissue. This gene likely plays a role in placental development and spermatogenesis.

#### ESX1 Antibody (N-term) - References

Bonaparte, E., et al. Hum. Reprod. 25(6):1398-1403(2010)  
Wang, X., et al. Hum. Mol. Genet. 16(17):2053-2060(2007)  
Loschiavo, M., et al. Mamm. Genome 18(1):75-85(2007)  
Murthi, P., et al. Mol. Hum. Reprod. 12(5):335-340(2006)  
Yanagihara, M., et al. Oncogene 24(38):5878-5887(2005)