

**HEBP1 Antibody (N-term)**  
**Affinity Purified Rabbit Polyclonal Antibody (Pab)**  
**Catalog # AP17264a****Specification**

---

**HEBP1 Antibody (N-term) - Product Information**

Application	WB,E
Primary Accession	<a href="#">O9NRV9</a>
Other Accession	<a href="#">NP_057071.2</a>
Reactivity	Human
Host	Rabbit
Clonality	Polyclonal
Isotype	Rabbit IgG
Calculated MW	21097
Antigen Region	5-32

**HEBP1 Antibody (N-term) - Additional Information****Gene ID** 50865**Other Names**

Heme-binding protein 1, p22HBP, HEBP1, HBP

**Target/Specificity**

This HEBP1 antibody is generated from rabbits immunized with a KLH conjugated synthetic peptide between 5-32 amino acids from the N-terminal region of human HEBP1.

**Dilution**

WB~~1:1000

E~~Use at an assay dependent concentration.

**Format**

Purified polyclonal antibody supplied in PBS with 0.09% (W/V) sodium azide. This antibody is purified through a protein A column, followed by peptide affinity purification.

**Storage**

Maintain refrigerated at 2-8°C for up to 2 weeks. For long term storage store at -20°C in small aliquots to prevent freeze-thaw cycles.

**Precautions**

HEBP1 Antibody (N-term) is for research use only and not for use in diagnostic or therapeutic procedures.

**HEBP1 Antibody (N-term) - Protein Information****Name** HEBP1**Synonyms** HBP

**Function** May bind free porphyrinogens that may be present in the cell and thus facilitate removal of these potentially toxic compound. Binds with a high affinity to one molecule of heme or porphyrins. It binds metalloporphyrins, free porphyrins and N-methylprotoporphyrin with similar affinities.

#### **Cellular Location**

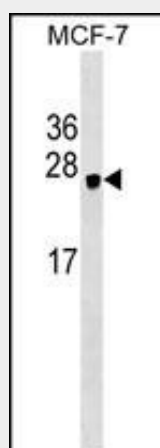
Cytoplasm.

#### **HEBP1 Antibody (N-term) - Protocols**

Provided below are standard protocols that you may find useful for product applications.

- [Western Blot](#)
- [Blocking Peptides](#)
- [Dot Blot](#)
- [Immunohistochemistry](#)
- [Immunofluorescence](#)
- [Immunoprecipitation](#)
- [Flow Cytometry](#)
- [Cell Culture](#)

#### **HEBP1 Antibody (N-term) - Images**



HEBP1 Antibody (N-term) (Cat. #AP17264a) western blot analysis in MCF-7 cell line lysates (35ug/lane). This demonstrates the HEBP1 antibody detected the HEBP1 protein (arrow).

#### **HEBP1 Antibody (N-term) - Background**

The full-length protein encoded by this gene is an intracellular tetrapyrrole-binding protein. This protein includes a natural chemoattractant peptide of 21 amino acids at the N-terminus, which is a natural ligand for formyl peptide receptor-like receptor 2 (FRL2) and promotes calcium mobilization and chemotaxis in monocytes and dendritic cells. [provided by RefSeq].

#### **HEBP1 Antibody (N-term) - References**

Bailey, S.D., et al. Diabetes Care 33(10):2250-2253(2010)  
Rose, J.E., et al. Mol. Med. 16 (7-8), 247-253 (2010) :

Talmud, P.J., et al. Am. J. Hum. Genet. 85(5):628-642(2009)  
Lambert, N.A. Sci Signal 1 (25), RE5 (2008) :  
Gao, J.L., et al. J. Immunol. 178(3):1450-1456(2007)