

IFRD2 Antibody (C-term)
Affinity Purified Rabbit Polyclonal Antibody (Pab)
Catalog # AP17265b**Specification**

IFRD2 Antibody (C-term) - Product Information

| | |
|-------------------|-----------------------------|
| Application | WB,E |
| Primary Accession | Q12894 |
| Other Accession | NP_006755.4 |
| Reactivity | Human |
| Host | Rabbit |
| Clonality | Polyclonal |
| Isotype | Rabbit IgG |
| Calculated MW | 48048 |
| Antigen Region | 478-506 |

IFRD2 Antibody (C-term) - Additional Information**Gene ID** 7866**Other Names**

Interferon-related developmental regulator 2, Protein SKMC15, IFRD2

Target/Specificity

This IFRD2 antibody is generated from rabbits immunized with a KLH conjugated synthetic peptide between 478-506 amino acids from the C-terminal region of human IFRD2.

Dilution

WB~~1:1000

E~~Use at an assay dependent concentration.

Format

Purified polyclonal antibody supplied in PBS with 0.09% (W/V) sodium azide. This antibody is purified through a protein A column, followed by peptide affinity purification.

Storage

Maintain refrigerated at 2-8°C for up to 2 weeks. For long term storage store at -20°C in small aliquots to prevent freeze-thaw cycles.

Precautions

IFRD2 Antibody (C-term) is for research use only and not for use in diagnostic or therapeutic procedures.

IFRD2 Antibody (C-term) - Protein Information**Name** IFRD2 {ECO:0000303|PubMed:30355441, ECO:0000312|HGNC:HGNC:5457}**Function** Ribosome-binding protein that acts as an inhibitor of mRNA translation by promoting

ribosome inactivation (PubMed:[30355441](#)). Associates with the P- and E-sites of the ribosome and inserts a C- terminal helix into the mRNA exit channel to preclude translation (By similarity).

Tissue Location

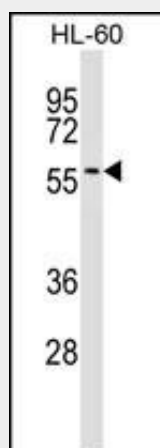
Expressed in many tissues including heart, brain, placenta, lung, liver, skeletal muscle, kidney and pancreas

IFRD2 Antibody (C-term) - Protocols

Provided below are standard protocols that you may find useful for product applications.

- [Western Blot](#)
- [Blocking Peptides](#)
- [Dot Blot](#)
- [Immunohistochemistry](#)
- [Immunofluorescence](#)
- [Immunoprecipitation](#)
- [Flow Cytometry](#)
- [Cell Culture](#)

IFRD2 Antibody (C-term) - Images



IFRD2 Antibody (C-term) (Cat. #AP17265b) western blot analysis in HL-60 cell line lysates (35ug/lane). This demonstrates the IFRD2 antibody detected the IFRD2 protein (arrow).

IFRD2 Antibody (C-term) - Background

IFRD2 contains a predicted bipartite nuclear localization signal and an armadillo-beta catenin-like repeat. It is highly expressed soon after gastrulation and in the hepatic primordium, suggesting an involvement in early hematopoiesis.

IFRD2 Antibody (C-term) - References

Wang, X., et al. PLoS ONE 5 (8), E11934 (2010) :
Lerman, M.I., et al. Cancer Res. 60(21):6116-6133(2000)
Buane, P., et al. Genomics 51(2):233-242(1998)
Latif, F., et al. Hum. Genet. 99(3):334-341(1997)