

PGBD1 Antibody (Center)
Affinity Purified Rabbit Polyclonal Antibody (Pab)
Catalog # AP17268C

Specification

PGBD1 Antibody (Center) - Product Information

Application	WB,E
Primary Accession	O96JS3
Other Accession	NP_001171672.1 , NP_115896.1
Reactivity	Human
Host	Rabbit
Clonality	Polyclonal
Isotype	Rabbit IgG
Calculated MW	92515
Antigen Region	347-375

PGBD1 Antibody (Center) - Additional Information

Gene ID 84547

Other Names

PiggyBac transposable element-derived protein 1, Cerebral protein 4, PGBD1

Target/Specificity

This PGBD1 antibody is generated from rabbits immunized with a KLH conjugated synthetic peptide between 347-375 amino acids from the Central region of human PGBD1.

Dilution

WB~~1:1000

E~~Use at an assay dependent concentration.

Format

Purified polyclonal antibody supplied in PBS with 0.09% (W/V) sodium azide. This antibody is purified through a protein A column, followed by peptide affinity purification.

Storage

Maintain refrigerated at 2-8°C for up to 2 weeks. For long term storage store at -20°C in small aliquots to prevent freeze-thaw cycles.

Precautions

PGBD1 Antibody (Center) is for research use only and not for use in diagnostic or therapeutic procedures.

PGBD1 Antibody (Center) - Protein Information

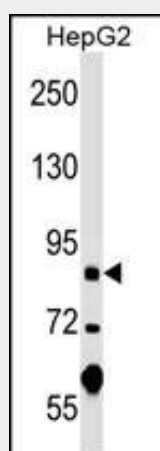
Name PGBD1

PGBD1 Antibody (Center) - Protocols

Provided below are standard protocols that you may find useful for product applications.

- [Western Blot](#)
- [Blocking Peptides](#)
- [Dot Blot](#)
- [Immunohistochemistry](#)
- [Immunofluorescence](#)
- [Immunoprecipitation](#)
- [Flow Cytometry](#)
- [Cell Culture](#)

PGBD1 Antibody (Center) - Images



PGBD1 Antibody (Center) (Cat. #AP17268c) western blot analysis in HepG2 cell line lysates (35ug/lane). This demonstrates the PGBD1 antibody detected the PGBD1 protein (arrow).

PGBD1 Antibody (Center) - Background

The piggyBac family of proteins, found in diverse animals, are transposases related to the transposase of the canonical piggyBac transposon from the moth, *Trichoplusia ni*. This family also includes genes in several genomes, including human, that appear to have been derived from the piggyBac transposons. This gene belongs to the subfamily of piggyBac transposable element derived (PGBD) genes. The PGBD proteins appear to be novel, with no obvious relationship to other transposases, or other known protein families. This gene product is specifically expressed in the brain, however, its exact function is not known. Alternative splicing results in multiple transcript variants encoding the same protein.

PGBD1 Antibody (Center) - References

Li, T., et al. *Biol. Psychiatry* 68(7):671-673(2010)
Corneveaux, J.J., et al. *Hum. Mol. Genet.* 19(16):3295-3301(2010)
Schjeide, B.M., et al. *Neurogenetics* 10(1):19-25(2009)
Sarkar, A., et al. *Mol. Genet. Genomics* 270(2):173-180(2003)