

ABTB1 Antibody (C-term)
Affinity Purified Rabbit Polyclonal Antibody (Pab)
Catalog # AP17274b**Specification**

ABTB1 Antibody (C-term) - Product Information

Application	WB,E
Primary Accession	O969K4
Other Accession	NP_742024.1
Reactivity	Human
Host	Rabbit
Clonality	Polyclonal
Isotype	Rabbit IgG
Calculated MW	53979
Antigen Region	371-398

ABTB1 Antibody (C-term) - Additional Information**Gene ID** 80325**Other Names**

Ankyrin repeat and BTB/POZ domain-containing protein 1, Elongation factor 1A-binding protein, ABTB1 ([HGNC:18275](http://www.genenames.org/cgi-bin/gene_symbol_report?hgnc_id=18275))

Target/Specificity

This ABTB1 antibody is generated from rabbits immunized with a KLH conjugated synthetic peptide between 371-398 amino acids from the C-terminal region of human ABTB1.

Dilution

WB~~1:1000

E~~Use at an assay dependent concentration.

Format

Purified polyclonal antibody supplied in PBS with 0.09% (W/V) sodium azide. This antibody is purified through a protein A column, followed by peptide affinity purification.

Storage

Maintain refrigerated at 2-8°C for up to 2 weeks. For long term storage store at -20°C in small aliquots to prevent freeze-thaw cycles.

Precautions

ABTB1 Antibody (C-term) is for research use only and not for use in diagnostic or therapeutic procedures.

ABTB1 Antibody (C-term) - Protein Information**Name** ABTB1 ([HGNC:18275](#))

Function May act as a mediator of the PTEN growth-suppressive signaling pathway. May play a role in developmental processes.

Cellular Location

Cytoplasm.

Tissue Location

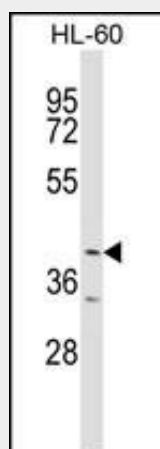
Ubiquitously expressed in all fetal tissues examined including heart, brain, liver, and kidney. Also expressed at lower levels in both adult heart and hypertrophic heart

ABTB1 Antibody (C-term) - Protocols

Provided below are standard protocols that you may find useful for product applications.

- [Western Blot](#)
- [Blocking Peptides](#)
- [Dot Blot](#)
- [Immunohistochemistry](#)
- [Immunofluorescence](#)
- [Immunoprecipitation](#)
- [Flow Cytometry](#)
- [Cell Culture](#)

ABTB1 Antibody (C-term) - Images



ABTB1 Antibody (C-term) (Cat. #AP17274b) western blot analysis in HL-60 cell line lysates (35ug/lane). This demonstrates the ABTB1 antibody detected the ABTB1 protein (arrow).

ABTB1 Antibody (C-term) - Background

This gene encodes a protein with an ankyrin repeat region and two BTB/POZ domains, which are thought to be involved in protein-protein interactions. Expression of this gene is activated by the phosphatase and tensin homolog, a tumor suppressor. Alternate splicing results in three transcript variants. [provided by RefSeq].

ABTB1 Antibody (C-term) - References

Koiwai, K., et al. Genes Cells 13(6):593-607(2008)

Maezawa, S., et al. Genes Cells 13(5):439-457(2008)

Unoki, M., et al. Oncogene 20(33):4457-4465(2001)

Dai, K.S., et al. Biochem. Biophys. Res. Commun. 273(3):991-996(2000)