

**PRDM5 Antibody (N-term)**  
**Affinity Purified Rabbit Polyclonal Antibody (Pab)**  
**Catalog # AP17297a**

**Specification**

---

**PRDM5 Antibody (N-term) - Product Information**

Application	WB,E
Primary Accession	<a href="#">O9NOX1</a>
Other Accession	<a href="#">NP_061169.2</a>
Reactivity	Human
Host	Rabbit
Clonality	Polyclonal
Isotype	Rabbit IgG
Calculated MW	73090
Antigen Region	132-160

**PRDM5 Antibody (N-term) - Additional Information**

**Gene ID** 11107

**Other Names**

PR domain zinc finger protein 5, 211-, PR domain-containing protein 5, PRDM5, PFM2

**Target/Specificity**

This PRDM5 antibody is generated from rabbits immunized with a KLH conjugated synthetic peptide between 132-160 amino acids from the N-terminal region of human PRDM5.

**Dilution**

WB~~1:1000

**Format**

Purified polyclonal antibody supplied in PBS with 0.09% (W/V) sodium azide. This antibody is purified through a protein A column, followed by peptide affinity purification.

**Storage**

Maintain refrigerated at 2-8°C for up to 2 weeks. For long term storage store at -20°C in small aliquots to prevent freeze-thaw cycles.

**Precautions**

PRDM5 Antibody (N-term) is for research use only and not for use in diagnostic or therapeutic procedures.

**PRDM5 Antibody (N-term) - Protein Information**

**Name** PRDM5

**Synonyms** PFM2

**Function** Sequence-specific DNA-binding transcription factor. Represses transcription at least in part by recruitment of the histone methyltransferase EHMT2/G9A and histone deacetylases such as HDAC1. Regulates hematopoiesis-associated protein-coding and microRNA (miRNA) genes. May regulate the expression of proteins involved in extracellular matrix development and maintenance, including fibrillar collagens, such as COL4A1 and COL11A1, connective tissue components, such as HAPLN1, and molecules regulating cell migration and adhesion, including EDIL3 and TGFB2. May cause G2/M arrest and apoptosis in cancer cells.

#### **Cellular Location**

Nucleus

#### **Tissue Location**

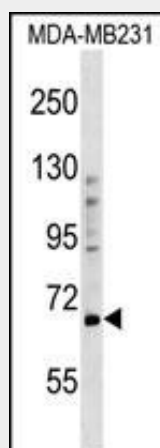
Widely expressed with highest levels in colon and ovary. Tends to be silenced in breast, colorectal, gastric and liver cancer tissues.

### **PRDM5 Antibody (N-term) - Protocols**

Provided below are standard protocols that you may find useful for product applications.

- [Western Blot](#)
- [Blocking Peptides](#)
- [Dot Blot](#)
- [Immunohistochemistry](#)
- [Immunofluorescence](#)
- [Immunoprecipitation](#)
- [Flow Cytometry](#)
- [Cell Culture](#)

### **PRDM5 Antibody (N-term) - Images**



PRDM5 Antibody (N-term) (Cat. #AP17297a) western blot analysis in MDA-MB231 cell line lysates (35ug/lane). This demonstrates the PRDM5 antibody detected the PRDM5 protein (arrow).

### **PRDM5 Antibody (N-term) - Background**

The protein encoded by this gene is a transcription factor of the PR-domain protein family. It contains a PR-domain and multiple zinc finger motifs. Transcription factors of the PR-domain family are known to be involved in cell differentiation and tumorigenesis.

**PRDM5 Antibody (N-term) - References**

Cheng, H.Y., et al. J. Cancer Res. Clin. Oncol. 136(12):1821-1825(2010)  
Rose, J.E., et al. Mol. Med. 16 (7-8), 247-253 (2010) :  
Kalsi, G., et al. Hum. Mol. Genet. 19(12):2497-2506(2010)  
Duan, Z., et al. Mol. Cell. Biol. 27(19):6889-6902(2007)  
Watanabe, Y., et al. Clin. Cancer Res. 13(16):4786-4794(2007)