

**Mouse Tlk1 Antibody (C-term)**  
**Affinity Purified Rabbit Polyclonal Antibody (Pab)**  
**Catalog # AP17323B**

**Specification**

---

**Mouse Tlk1 Antibody (C-term) - Product Information**

Application	WB,E
Primary Accession	<a href="#">Q8C0V0</a>
Other Accession	<a href="#">Q9UKI8</a> , <a href="#">NP_766252.2</a>
Reactivity	Mouse
Predicted	Human
Host	Rabbit
Clonality	Polyclonal
Isotype	Rabbit IgG
Calculated MW	86624
Antigen Region	701-728

**Mouse Tlk1 Antibody (C-term) - Additional Information**

**Gene ID** 228012

**Other Names**

Serine/threonine-protein kinase tousled-like 1, Tousled-like kinase 1, Tlk1

**Target/Specificity**

This Mouse Tlk1 antibody is generated from rabbits immunized with a KLH conjugated synthetic peptide between 701-728 amino acids from the C-terminal region of mouse Tlk1.

**Dilution**

WB~~1:1000

E~~Use at an assay dependent concentration.

**Format**

Purified polyclonal antibody supplied in PBS with 0.09% (W/V) sodium azide. This antibody is purified through a protein A column, followed by peptide affinity purification.

**Storage**

Maintain refrigerated at 2-8°C for up to 2 weeks. For long term storage store at -20°C in small aliquots to prevent freeze-thaw cycles.

**Precautions**

Mouse Tlk1 Antibody (C-term) is for research use only and not for use in diagnostic or therapeutic procedures.

**Mouse Tlk1 Antibody (C-term) - Protein Information**

**Name** Tlk1

**Function** Rapidly and transiently inhibited by phosphorylation following the generation of DNA double-stranded breaks during S-phase. This is cell cycle checkpoint and ATM-pathway dependent and appears to regulate processes involved in chromatin assembly (By similarity). Isoform 3 protects the cells from the ionizing radiation by facilitating the repair of DSBs. In vitro, phosphorylates histone H3 at 'Ser-10' (By similarity).

**Cellular Location**

Nucleus.

**Tissue Location**

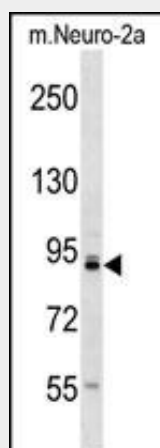
Ubiquitously expressed in all tissues examined.

**Mouse Tlk1 Antibody (C-term) - Protocols**

Provided below are standard protocols that you may find useful for product applications.

- [Western Blot](#)
- [Blocking Peptides](#)
- [Dot Blot](#)
- [Immunohistochemistry](#)
- [Immunofluorescence](#)
- [Immunoprecipitation](#)
- [Flow Cytometry](#)
- [Cell Culture](#)

**Mouse Tlk1 Antibody (C-term) - Images**



Mouse Tlk1 Antibody (C-term) (Cat. #AP17323b) western blot analysis in mouse Neuro-2a cell line lysates (35ug/lane). This demonstrates the Tlk1 antibody detected the Tlk1 protein (arrow).

**Mouse Tlk1 Antibody (C-term) - Background**

Rapidly and transiently inhibited by phosphorylation following the generation of DNA double-stranded breaks during S-phase. This is cell cycle checkpoint and ATM-pathway dependent and appears to regulate processes involved in chromatin assembly (By similarity). Isoform 3 protects the cells from the ionizing radiation by facilitating the repair of DSBs. In vitro, phosphorylates histone H3 at 'Ser-10' (By similarity).

**Mouse Tlk1 Antibody (C-term) - References**

Canfield, C., et al. BMC Mol. Biol. 10, 110 (2009) :  
Taniwaki, T., et al. Dev. Growth Differ. 47(3):163-172(2005)  
Sunavala-Dossabhoy, G., et al. BMC Mol. Biol. 6, 19 (2005) :  
Cobellis, G., et al. Nucleic Acids Res. 33 (4), E44 (2005) :  
Okazaki, N., et al. DNA Res. 11(3):205-218(2004)