

RBM23 Antibody (Center)
Affinity Purified Rabbit Polyclonal Antibody (Pab)
Catalog # AP17329C**Specification**

RBM23 Antibody (Center) - Product Information

Application	WB,E
Primary Accession	Q86U06
Other Accession	NP_001070820.1 , NP_001070819.1
Reactivity	Human
Host	Rabbit
Clonality	Polyclonal
Isotype	Rabbit IgG
Calculated MW	48731
Antigen Region	128-157

RBM23 Antibody (Center) - Additional Information**Gene ID** 55147**Other Names**

Probable RNA-binding protein 23, RNA-binding motif protein 23, RNA-binding region-containing protein 4, Splicing factor SF2, RBM23, RNPC4

Target/Specificity

This RBM23 antibody is generated from rabbits immunized with a KLH conjugated synthetic peptide between 128-157 amino acids from the Central region of human RBM23.

Dilution

WB~~1:1000

E~~Use at an assay dependent concentration.

Format

Purified polyclonal antibody supplied in PBS with 0.09% (W/V) sodium azide. This antibody is purified through a protein A column, followed by peptide affinity purification.

Storage

Maintain refrigerated at 2-8°C for up to 2 weeks. For long term storage store at -20°C in small aliquots to prevent freeze-thaw cycles.

Precautions

RBM23 Antibody (Center) is for research use only and not for use in diagnostic or therapeutic procedures.

RBM23 Antibody (Center) - Protein Information**Name** RBM23 {ECO:0000303|PubMed:31693891, ECO:0000312|HGNC:HGNC:20155}

Function RNA-binding protein that acts both as a transcription coactivator and pre-mRNA splicing factor (PubMed:[15694343](#)). Regulates steroid hormone receptor-mediated transcription, independently of the pre-mRNA splicing factor activity (PubMed:[15694343](#)).

Cellular Location

Nucleus.

Tissue Location

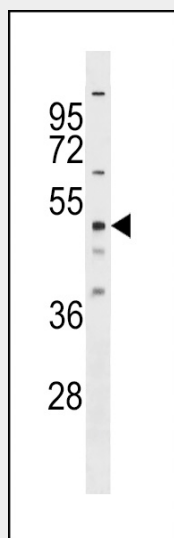
Highly expressed in placenta, liver, skeletal muscle, heart and kidney (PubMed:15694343). Expressed at lower levels in the colon, thymus, spleen, small intestine and lung (PubMed:15694343).

RBM23 Antibody (Center) - Protocols

Provided below are standard protocols that you may find useful for product applications.

- [Western Blot](#)
- [Blocking Peptides](#)
- [Dot Blot](#)
- [Immunohistochemistry](#)
- [Immunofluorescence](#)
- [Immunoprecipitation](#)
- [Flow Cytometry](#)
- [Cell Culture](#)

RBM23 Antibody (Center) - Images



RBM23 Antibody (Center) (Cat. #AP17329c) western blot analysis in HeLa cell line lysates (35ug/lane). This demonstrates the RBM23 antibody detected the RBM23 protein (arrow).

RBM23 Antibody (Center) - Background

This gene encodes a member of the U2AF-like family of RNA binding proteins. This protein interacts with some steroid nuclear receptors, localizes to the promoter of a steroid-responsive gene, and increases transcription of steroid-responsive transcriptional reporters in a hormone-dependent manner. It is also implicated in

the steroid receptor-dependent regulation of alternative splicing. Multiple transcript variants encoding different isoforms have been found for this gene.

RBM23 Antibody (Center) - References

Lamesch, P., et al. Genomics 89(3):307-315(2007)
Olsen, J.V., et al. Cell 127(3):635-648(2006)
Olsen, J.V., et al. Cell 127(3):635-648(2006)
Stelzl, U., et al. Cell 122(6):957-968(2005)
Dowhan, D.H., et al. Mol. Cell 17(3):429-439(2005)

RBM23 Antibody (Center) - Citations

- [The Epstein-Barr virus EBNA1 protein modulates the alternative splicing of cellular genes.](#)