

TAS2R10 Antibody (Center)
Affinity Purified Rabbit Polyclonal Antibody (Pab)
Catalog # AP17340c

Specification

TAS2R10 Antibody (Center) - Product Information

| | |
|-------------------|-----------------------------|
| Application | WB,E |
| Primary Accession | O9NYW0 |
| Other Accession | NP_076410.1 |
| Reactivity | Human |
| Host | Rabbit |
| Clonality | Polyclonal |
| Isotype | Rabbit IgG |
| Calculated MW | 35365 |
| Antigen Region | 134-160 |

TAS2R10 Antibody (Center) - Additional Information

Gene ID 50839

Other Names

Taste receptor type 2 member 10, T2R10, Taste receptor family B member 2, TRB2, TAS2R10

Target/Specificity

This TAS2R10 antibody is generated from rabbits immunized with a KLH conjugated synthetic peptide between 134-160 amino acids from the Central region of human TAS2R10.

Dilution

WB~~1:1000

Format

Purified polyclonal antibody supplied in PBS with 0.09% (W/V) sodium azide. This antibody is purified through a protein A column, followed by peptide affinity purification.

Storage

Maintain refrigerated at 2-8°C for up to 2 weeks. For long term storage store at -20°C in small aliquots to prevent freeze-thaw cycles.

Precautions

TAS2R10 Antibody (Center) is for research use only and not for use in diagnostic or therapeutic procedures.

TAS2R10 Antibody (Center) - Protein Information

Name TAS2R10

Function Gustducin-coupled strychnine receptor implicated in the perception of bitter compounds in the oral cavity and the gastrointestinal tract. Signals through PLCB2 and the calcium-regulated

cation channel TRPM5.

Cellular Location

Membrane; Multi-pass membrane protein.

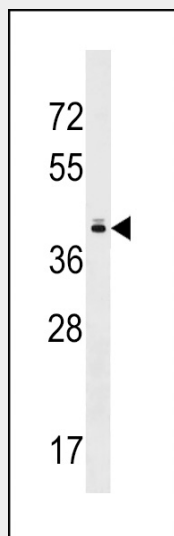
Tissue Location

Expressed in subsets of taste receptor cells of the tongue and palate epithelium and exclusively in gustducin-positive cells

TAS2R10 Antibody (Center) - Protocols

Provided below are standard protocols that you may find useful for product applications.

- [Western Blot](#)
- [Blocking Peptides](#)
- [Dot Blot](#)
- [Immunohistochemistry](#)
- [Immunofluorescence](#)
- [Immunoprecipitation](#)
- [Flow Cytometry](#)
- [Cell Culture](#)

TAS2R10 Antibody (Center) - Images

TAS2R10 Antibody (Center) (Cat. #AP17340c) western blot analysis in MDA-MB453 cell line lysates (35ug/lane). This demonstrates the TAS2R10 antibody detected the TAS2R10 protein (arrow).

TAS2R10 Antibody (Center) - Background

This gene product belongs to the family of candidate taste receptors that are members of the G-protein-coupled receptor superfamily. These proteins are specifically expressed in the taste receptor cells of the tongue and palate epithelia. They are organized in the genome in clusters and are genetically linked to loci that influence bitter perception in mice and humans. In functional expression studies, they respond to bitter tastants.

This gene maps to the taste receptor gene cluster on chromosome 12p13.

TAS2R10 Antibody (Center) - References

Go, Y., et al. Genetics 170(1):313-326(2005)
Mueller, K.L., et al. Nature 434(7030):225-229(2005)
Fischer, A., et al. Mol. Biol. Evol. 22(3):432-436(2005)
Zhang, Y., et al. Cell 112(3):293-301(2003)
Montmayeur, J.P., et al. Curr. Opin. Neurobiol. 12(4):366-371(2002)