

TAS2R9 Antibody (Center)
Affinity Purified Rabbit Polyclonal Antibody (Pab)
Catalog # AP17341c**Specification**

TAS2R9 Antibody (Center) - Product Information

Application	WB,E
Primary Accession	O9NYW1
Other Accession	NP_076406.1
Reactivity	Human
Host	Rabbit
Clonality	Polyclonal
Isotype	Rabbit IgG
Calculated MW	35611
Antigen Region	154-180

TAS2R9 Antibody (Center) - Additional Information**Gene ID** 50835**Other Names**

Taste receptor type 2 member 9, T2R9, Taste receptor family B member 6, TRB6, TAS2R9

Target/Specificity

This TAS2R9 antibody is generated from rabbits immunized with a KLH conjugated synthetic peptide between 154-180 amino acids from the Central region of human TAS2R9.

Dilution

WB~~1:1000

Format

Purified polyclonal antibody supplied in PBS with 0.09% (W/V) sodium azide. This antibody is purified through a protein A column, followed by peptide affinity purification.

Storage

Maintain refrigerated at 2-8°C for up to 2 weeks. For long term storage store at -20°C in small aliquots to prevent freeze-thaw cycles.

Precautions

TAS2R9 Antibody (Center) is for research use only and not for use in diagnostic or therapeutic procedures.

TAS2R9 Antibody (Center) - Protein Information**Name** TAS2R9

Function Gustducin-coupled receptor implicated in the perception of bitter compounds in the oral cavity and the gastrointestinal tract. Signals through PLCB2 and the calcium-regulated cation

channel TRPM5 (By similarity).

Cellular Location

Membrane; Multi-pass membrane protein.

Tissue Location

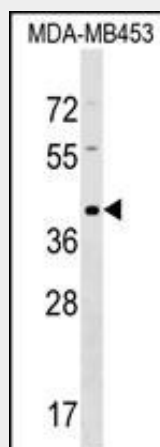
Expressed in subsets of taste receptor cells of the tongue and palate epithelium and exclusively in gustducin-positive cells

TAS2R9 Antibody (Center) - Protocols

Provided below are standard protocols that you may find useful for product applications.

- [Western Blot](#)
- [Blocking Peptides](#)
- [Dot Blot](#)
- [Immunohistochemistry](#)
- [Immunofluorescence](#)
- [Immunoprecipitation](#)
- [Flow Cytometry](#)
- [Cell Culture](#)

TAS2R9 Antibody (Center) - Images



TAS2R9 Antibody (Center) (Cat. #AP17341c) western blot analysis in MDA-MB453 cell line lysates (35ug/lane). This demonstrates the TAS2R9 antibody detected the TAS2R9 protein (arrow).

TAS2R9 Antibody (Center) - Background

This gene product belongs to the family of candidate taste receptors that are members of the G-protein-coupled receptor superfamily. These proteins are specifically expressed in the taste receptor cells of the tongue and palate epithelia. They are organized in the genome in clusters and are genetically linked to loci that influence bitter perception in mice and humans. In functional expression studies, they respond to bitter tastants. This gene maps to the taste receptor gene cluster on chromosome 12p13.

TAS2R9 Antibody (Center) - References

Dotson, C.D., et al. PLoS ONE 3 (12), E3974 (2008) :
Go, Y., et al. Genetics 170(1):313-326(2005)
Fischer, A., et al. Mol. Biol. Evol. 22(3):432-436(2005)
Zhang, Y., et al. Cell 112(3):293-301(2003)
Montmayeur, J.P., et al. Curr. Opin. Neurobiol. 12(4):366-371(2002)