

**LAS1L Antibody (C-term)**  
**Affinity Purified Rabbit Polyclonal Antibody (Pab)**  
**Catalog # AP17345B****Specification**

---

**LAS1L Antibody (C-term) - Product Information**

Application	WB,E
Primary Accession	<a href="#">O9Y4W2</a>
Other Accession	<a href="#">NP_001164120.1</a> , <a href="#">NP_001164121.1</a>
Reactivity	Human
Host	Rabbit
Clonality	Polyclonal
Isotype	Rabbit IgG
Calculated MW	83065
Antigen Region	639-665

**LAS1L Antibody (C-term) - Additional Information****Gene ID** 81887**Other Names**

Ribosomal biogenesis protein LAS1L, Protein LAS1 homolog, LAS1L

**Target/Specificity**

This LAS1L antibody is generated from rabbits immunized with a KLH conjugated synthetic peptide between 639-665 amino acids from the C-terminal region of human LAS1L.

**Dilution**

WB~~1:1000

E~~Use at an assay dependent concentration.

**Format**

Purified polyclonal antibody supplied in PBS with 0.09% (W/V) sodium azide. This antibody is purified through a protein A column, followed by peptide affinity purification.

**Storage**

Maintain refrigerated at 2-8°C for up to 2 weeks. For long term storage store at -20°C in small aliquots to prevent freeze-thaw cycles.

**Precautions**

LAS1L Antibody (C-term) is for research use only and not for use in diagnostic or therapeutic procedures.

**LAS1L Antibody (C-term) - Protein Information****Name** LAS1L**Function** Required for the synthesis of the 60S ribosomal subunit and maturation of the 28S rRNA

(PubMed:[20647540](#)). Functions as a component of the Five Friends of Methylated CHTOP (5FMC) complex; the 5FMC complex is recruited to ZNF148 by methylated CHTOP, leading to desumoylation of ZNF148 and subsequent transactivation of ZNF148 target genes (PubMed:[22872859](#)). Required for the efficient pre-rRNA processing at both ends of internal transcribed spacer 2 (ITS2) (PubMed:[22083961](#)).

#### Cellular Location

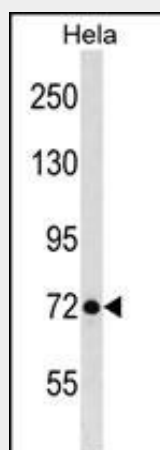
Nucleus, nucleolus. Nucleus, nucleoplasm {ECO:0000250|UniProtKB:A2BE28}. Cytoplasm {ECO:0000250|UniProtKB:A2BE28}. Note=Mainly found in the nucleoplasm, with low levels detected in the cytoplasmic and chromatin fractions (By similarity). Localizes mainly to the granular component, the region implicated in the later steps of rRNA processing and subunit assembly and export. {ECO:0000250|UniProtKB:A2BE28}

#### LAS1L Antibody (C-term) - Protocols

Provided below are standard protocols that you may find useful for product applications.

- [Western Blot](#)
- [Blocking Peptides](#)
- [Dot Blot](#)
- [Immunohistochemistry](#)
- [Immunofluorescence](#)
- [Immunoprecipitation](#)
- [Flow Cytometry](#)
- [Cell Culture](#)

#### LAS1L Antibody (C-term) - Images



LAS1L Antibody (C-term) (Cat. #AP17345b) western blot analysis in HeLa cell line lysates (35ug/lane). This demonstrates the LAS1L antibody detected the LAS1L protein (arrow).

#### LAS1L Antibody (C-term) - Background

The function of LAS1L has not been determined.

#### LAS1L Antibody (C-term) - References

Castle, C.D., et al. Mol. Cell. Biol. 30(18):4404-4414(2010)  
Scherl, A., et al. Mol. Biol. Cell 13(11):4100-4109(2002)