

ANP32C Antibody (Center)
Affinity Purified Rabbit Polyclonal Antibody (Pab)
Catalog # AP17348c**Specification**

ANP32C Antibody (Center) - Product Information

Application	WB,E
Primary Accession	O43423
Other Accession	NP_036535.1
Reactivity	Human
Host	Rabbit
Clonality	Polyclonal
Isotype	Rabbit IgG
Calculated MW	26762
Antigen Region	130-158

ANP32C Antibody (Center) - Additional Information**Other Names**

Acidic leucine-rich nuclear phosphoprotein 32 family member C, Phosphoprotein 32-related protein 1, Tumorigenic protein pp32r1, ANP32C, PP32R1

Target/Specificity

This ANP32C antibody is generated from rabbits immunized with a KLH conjugated synthetic peptide between 130-158 amino acids from the Central region of human ANP32C.

Dilution

WB~~1:1000

E~~Use at an assay dependent concentration.

Format

Purified polyclonal antibody supplied in PBS with 0.09% (W/V) sodium azide. This antibody is purified through a protein A column, followed by peptide affinity purification.

Storage

Maintain refrigerated at 2-8°C for up to 2 weeks. For long term storage store at -20°C in small aliquots to prevent freeze-thaw cycles.

Precautions

ANP32C Antibody (Center) is for research use only and not for use in diagnostic or therapeutic procedures.

ANP32C Antibody (Center) - Protein Information

Name ANP32CP ([HGNC:16675](#))

Synonyms PP32R1

Tissue Location

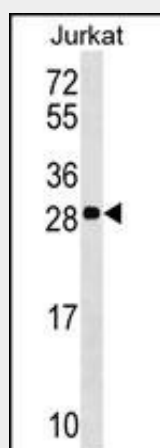
Expressed in activated stem cells, such as mobilized CD34+ cells and cord blood CD34+ cells, but not in resting bone marrow CD34+ cells. Expressed in a variety of neoplastic cell lines, mainly in prostatic adenocarcinoma cell lines. Not expressed in normal prostatic tissue.

ANP32C Antibody (Center) - Protocols

Provided below are standard protocols that you may find useful for product applications.

- [Western Blot](#)
- [Blocking Peptides](#)
- [Dot Blot](#)
- [Immunohistochemistry](#)
- [Immunofluorescence](#)
- [Immunoprecipitation](#)
- [Flow Cytometry](#)
- [Cell Culture](#)

ANP32C Antibody (Center) - Images



ANP32C Antibody (Center) (Cat. #AP17348c) western blot analysis in Jurkat cell line lysates (35ug/lane). This demonstrates the ANP32C antibody detected the ANP32C protein (arrow).

ANP32C Antibody (Center) - Background

Phosphoprotein 32 (PP32) is a tumor suppressor that can inhibit several types of cancers, including prostate and breast cancers. The protein encoded by this gene is one of at least two proteins that are similar in amino acid sequence to PP32 and are part of the same acidic nuclear phosphoprotein gene family. However, unlike PP32, the encoded protein is tumorigenic. The tumor suppressor function of PP32 has been localized to a 25 amino acid region that is divergent between PP32 and the protein encoded by this gene. This gene does not contain introns. [provided by RefSeq].

ANP32C Antibody (Center) - References

Matilla, A., et al. Cerebellum 4(1):7-18(2005)
Kochevar, G.J., et al. Hum. Mutat. 23(6):546-551(2004)

Fan, Z., et al. Nat. Immunol. 4(2):145-153(2003)
Kadkol, S.S., et al. Breast Cancer Res. Treat. 68(1):65-73(2001)
Kadkol, S.S., et al. Nat. Med. 5 (9), 1087 (1999) :