

CABP4 Antibody (C-term)
Affinity Purified Rabbit Polyclonal Antibody (Pab)
Catalog # AP17350b**Specification**

CABP4 Antibody (C-term) - Product Information

Application	WB,E
Primary Accession	P57796
Other Accession	NP_660201.1
Reactivity	Human
Host	Rabbit
Clonality	Polyclonal
Isotype	Rabbit IgG
Calculated MW	30433
Antigen Region	175-203

CABP4 Antibody (C-term) - Additional Information**Gene ID** 57010**Other Names**

Calcium-binding protein 4, CaBP4, CABP4

Target/Specificity

This CABP4 antibody is generated from rabbits immunized with a KLH conjugated synthetic peptide between 175-203 amino acids from the C-terminal region of human CABP4.

Dilution

WB~~1:1000

E~~Use at an assay dependent concentration.

Format

Purified polyclonal antibody supplied in PBS with 0.09% (W/V) sodium azide. This antibody is purified through a protein A column, followed by peptide affinity purification.

Storage

Maintain refrigerated at 2-8°C for up to 2 weeks. For long term storage store at -20°C in small aliquots to prevent freeze-thaw cycles.

Precautions

CABP4 Antibody (C-term) is for research use only and not for use in diagnostic or therapeutic procedures.

CABP4 Antibody (C-term) - Protein Information**Name** CABP4**Function** Involved in normal synaptic function through regulation of Ca(2+) influx and

neurotransmitter release in photoreceptor synaptic terminals and in auditory transmission. Modulator of CACNA1D and CACNA1F, suppressing the calcium-dependent inactivation and shifting the activation range to more hyperpolarized voltages (By similarity).

Cellular Location

Cytoplasm. Presynapse {ECO:0000250|UniProtKB:Q8VHC5}. Note=Found in rod spherules and cone pedicles of the presynapses from both types of photoreceptors {ECO:0000250|UniProtKB:Q8VHC5}

Tissue Location

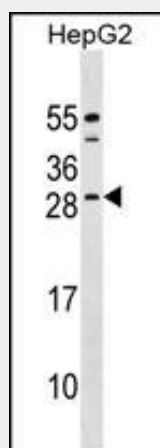
Expressed in retina and in the inner hair cells (IHC) of the cochlea

CABP4 Antibody (C-term) - Protocols

Provided below are standard protocols that you may find useful for product applications.

- [Western Blot](#)
- [Blocking Peptides](#)
- [Dot Blot](#)
- [Immunohistochemistry](#)
- [Immunofluorescence](#)
- [Immunoprecipitation](#)
- [Flow Cytometry](#)
- [Cell Culture](#)

CABP4 Antibody (C-term) - Images



CABP4 Antibody (C-term) (Cat. #AP17350b) western blot analysis in HepG2 cell line lysates (35ug/lane). This demonstrates the CABP4 antibody detected the CABP4 protein (arrow).

CABP4 Antibody (C-term) - Background

This gene encodes a member of the CABP family of calcium binding protein characterized by four EF-hand motifs. Mutations in this gene are associated with congenital stationary night blindness type 2B.

CABP4 Antibody (C-term) - References

Aldahmesh, M.A., et al. Mol. Vis. 16, 207-212 (2010) :

Littink, K.W., et al. Invest. Ophthalmol. Vis. Sci. 50(5):2344-2350(2009)
Zeitz, C., et al. Am. J. Hum. Genet. 79(4):657-667(2006)
Taylor, T.D., et al. Nature 440(7083):497-500(2006)
Haeseleer, F., et al. Nat. Neurosci. 7(10):1079-1087(2004)