

**ONECUT2 Antibody (N-term)**  
**Affinity Purified Rabbit Polyclonal Antibody (Pab)**  
**Catalog # AP17354a**

**Specification**

---

**ONECUT2 Antibody (N-term) - Product Information**

Application	WB,E
Primary Accession	<a href="#">O95948</a>
Other Accession	<a href="#">NP_004843.2</a>
Reactivity	Human
Host	Rabbit
Clonality	Polyclonal
Isotype	Rabbit IgG
Calculated MW	54303
Antigen Region	102-130

**ONECUT2 Antibody (N-term) - Additional Information**

**Gene ID** 9480

**Other Names**

One cut domain family member 2, Hepatocyte nuclear factor 6-beta, HNF-6-beta, One cut homeobox 2, Transcription factor ONECUT-2, OC-2, ONECUT2, HNF6B

**Target/Specificity**

This ONECUT2 antibody is generated from rabbits immunized with a KLH conjugated synthetic peptide between 102-130 amino acids from the N-terminal region of human ONECUT2.

**Dilution**

WB~~1:1000

**Format**

Purified polyclonal antibody supplied in PBS with 0.09% (W/V) sodium azide. This antibody is purified through a protein A column, followed by peptide affinity purification.

**Storage**

Maintain refrigerated at 2-8°C for up to 2 weeks. For long term storage store at -20°C in small aliquots to prevent freeze-thaw cycles.

**Precautions**

ONECUT2 Antibody (N-term) is for research use only and not for use in diagnostic or therapeutic procedures.

**ONECUT2 Antibody (N-term) - Protein Information**

**Name** ONECUT2

**Synonyms** HNF6B

**Function** Transcriptional activator. Activates the transcription of a number of liver genes such as HNF3B.

**Cellular Location**

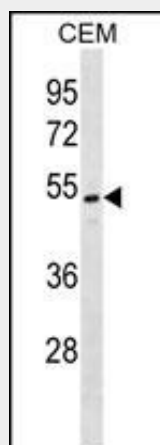
Nucleus.

**ONECUT2 Antibody (N-term) - Protocols**

Provided below are standard protocols that you may find useful for product applications.

- [Western Blot](#)
- [Blocking Peptides](#)
- [Dot Blot](#)
- [Immunohistochemistry](#)
- [Immunofluorescence](#)
- [Immunoprecipitation](#)
- [Flow Cytometry](#)
- [Cell Culture](#)

**ONECUT2 Antibody (N-term) - Images**



ONECUT2 Antibody (N-term) (Cat. #AP17354a) western blot analysis in CEM cell line lysates (35ug/lane). This demonstrates the ONECUT2 antibody detected the ONECUT2 protein (arrow).

**ONECUT2 Antibody (N-term) - Background**

This gene encodes a member of the onecut family of transcription factors, which are characterized by a cut domain and an atypical homeodomain. The protein binds to specific DNA sequences and stimulates expression of target genes, including genes involved in melanocyte and hepatocyte differentiation.

**ONECUT2 Antibody (N-term) - References**

- Furuno, K., et al. Genes Immun. 9(4):302-308(2008)  
Pike, B.L., et al. Leukemia 22(5):1035-1043(2008)  
Rauch, T., et al. Cancer Res. 66(16):7939-7947(2006)  
Jacquemin, P., et al. Biochem. Biophys. Res. Commun. 285(5):1200-1205(2001)  
Jacquemin, P., et al. J. Biol. Chem. 274(5):2665-2671(1999)