

NPLOC4 Antibody (C-term)
Affinity Purified Rabbit Polyclonal Antibody (Pab)
Catalog # AP17356b**Specification**

NPLOC4 Antibody (C-term) - Product Information

| | |
|-------------------|---|
| Application | WB,E |
| Primary Accession | Q8TAT6 |
| Other Accession | Q9ES54 , P60670 , NP_060391.2 |
| Reactivity | Human |
| Predicted | Mouse, Rat |
| Host | Rabbit |
| Clonality | Polyclonal |
| Isotype | Rabbit IgG |
| Calculated MW | 68120 |
| Antigen Region | 456-484 |

NPLOC4 Antibody (C-term) - Additional Information**Gene ID** 55666**Other Names**

Nuclear protein localization protein 4 homolog, Protein NPL4, NPLOC4, KIAA1499, NPL4

Target/Specificity

This NPLOC4 antibody is generated from rabbits immunized with a KLH conjugated synthetic peptide between 456-484 amino acids from the C-terminal region of human NPLOC4.

Dilution

WB~~1:1000

Format

Purified polyclonal antibody supplied in PBS with 0.09% (W/V) sodium azide. This antibody is purified through a protein A column, followed by peptide affinity purification.

Storage

Maintain refrigerated at 2-8°C for up to 2 weeks. For long term storage store at -20°C in small aliquots to prevent freeze-thaw cycles.

Precautions

NPLOC4 Antibody (C-term) is for research use only and not for use in diagnostic or therapeutic procedures.

NPLOC4 Antibody (C-term) - Protein Information**Name** NPLOC4**Synonyms** KIAA1499, NPL4

Function The ternary complex containing UFD1, VCP and NPLOC4 binds ubiquitinated proteins and is necessary for the export of misfolded proteins from the ER to the cytoplasm, where they are degraded by the proteasome. The NPLOC4-UFD1-VCP complex regulates spindle disassembly at the end of mitosis and is necessary for the formation of a closed nuclear envelope (By similarity). Acts as a negative regulator of type I interferon production via the complex formed with VCP and UFD1, which binds to RIGI and recruits RNF125 to promote ubiquitination and degradation of RIGI (PubMed:[26471729](#)).

Cellular Location

Cytoplasm, cytosol {ECO:0000250|UniProtKB:Q9ES54}. Endoplasmic reticulum {ECO:0000250|UniProtKB:Q9ES54}. Nucleus {ECO:0000250|UniProtKB:Q9ES54} Note=Associated with the endoplasmic reticulum and nuclear {ECO:0000250|UniProtKB:Q9ES54}

Tissue Location

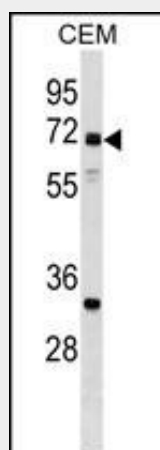
Expressed at highest levels in brain, heart, skeletal muscle, kidney and fetal liver.

NPLOC4 Antibody (C-term) - Protocols

Provided below are standard protocols that you may find useful for product applications.

- [Western Blot](#)
- [Blocking Peptides](#)
- [Dot Blot](#)
- [Immunohistochemistry](#)
- [Immunofluorescence](#)
- [Immunoprecipitation](#)
- [Flow Cytometry](#)
- [Cell Culture](#)

NPLOC4 Antibody (C-term) - Images



NPLOC4 Antibody (C-term) (Cat. #AP17356b) western blot analysis in CEM cell line lysates (35ug/lane). This demonstrates the NPLOC4 antibody detected the NPLOC4 protein (arrow).

NPLOC4 Antibody (C-term) - Background

The ternary complex containing UFD1L, VCP and NPLOC4 binds ubiquitinated proteins and is necessary for the export of misfolded proteins from the ER to the cytoplasm, where they are degraded by the proteasome. The NPLOC4-UFD1L-VCP complex regulates spindle disassembly at the end of mitosis and is necessary for the formation of a closed nuclear envelope (By similarity).

NPLOC4 Antibody (C-term) - References

Liu, F., et al. PLoS Genet. 6, E1000934 (2010) :
Lass, A., et al. Exp. Cell Res. 314(14):2715-2723(2008)
McConnell, E., et al. Biochem. Biophys. Res. Commun. 355(4):1087-1090(2007)
Gevaert, K., et al. Nat. Biotechnol. 21(5):566-569(2003)
Botta, A., et al. Gene 275(1):39-46(2001)